



Ceiling Systems Accessories Catalog

Equipment Boom Accessories

Clinical Shelves	4
Equipment Rails	5
Equipment Shelves	7
HarmonyAIR™ Smoke Evacuation System	8
IV Support	10
Medical Gas Support	14
Monitor Arms	19
Organizational Tools	24

Surgical Exam Lighting and Lighting Accessories

Exam Lighting	31
Light Handles-Sterile Surgeon Controls	33
Upgradeable Options	35

Indices

Index by Item Description	36
Index by Equipment Number	43

How to Order

On the following pages you will find specifications for accessories to be used on STERIS's Ceiling Systems. For more information about STERIS's surgical accessories, contact your STERIS Account Manager, or call STERIS Healthcare Customer Service at 800-548-4873.

Thank you for your business.

STERIS Warranty

STERIS Corporation is committed to customer satisfaction. STERIS will correct any defects(s) in material or workmanship occurring during the warranty period in accordance with the following terms:

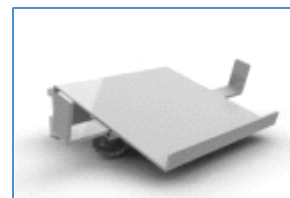
- For 12 months after the warranty start date, STERIS Corporation will provide free replacement parts for all equipment that does not perform according to its specifications. The warranty start date is the date 30 days after STERIS ships the equipment.
- All work on STERIS equipment during the warranty period must be performed by a qualified technician. Additional information is available in STERIS's Warranty and Customer Assistance Information booklet, P-056399-116, available upon request.

Angled Shelves

The Angled Shelves are used in the critical care environment for additional equipment shelf space and to hold patient charts. The aluminum shelves attach via the equipment rails on the EMS column and have optional Velcro straps to secure equipment.

Equipment No.

LS1009005	8" W x 8" D without Velcro
LS1009006	13" W x 8" D without Velcro
LS1009014	8" W x 8" D with Velcro
LS1009015	13" W x 8" D with Velcro

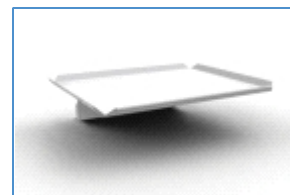


Flat Shelves

The Flat Shelves are used in the critical care environment for additional shelf space to hold accessories, charts, and equipment. The aluminum shelf attaches to equipment rails on the EMS column.

Equipment No.

LS1009001	10" W x 8" D
LS1009002	10" W x 13" D
LS1009003	13" W x 13" D
LS1009004	19" W x 13" D

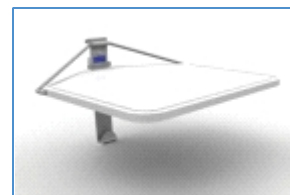


Workstation Shelves

The Workstation Shelves create a flexible work surface or additional shelf space for the critical care area and will fold up when not in use to save space. The aluminum shelves mount via the equipment rail or 38mm poles.

Equipment No.

LS1009100	10" W x 15" D Mounts to Extension Rail
LS1009103	8" W x 12" D Mounts to 38mm Pole

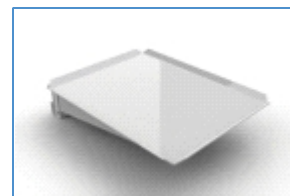


Hinged Shelves

The Hinged Shelves are used in the critical care environment for additional equipment shelf space. The aluminum shelves attach via the equipment rails on the equipment column and can be folded down when not in use to save space.

Equipment No.

LS1009007	9" W x 12" D
LS1009008	13.5" W x 10" D
LS1009009	17" W x 12" D



Mayo Trays

The Mayo Tray is used in the critical care environment to provide additional shelf space when needed. The aluminum trays attach to the equipment rails on the equipment column and can be folded down or removed when not in use to save space.

Equipment No.

LS1009010	13.625" W x 9.75" D Hinged
LS1009011	17.125" W x 11.625" D Hinged
LS1009012	13.625" W x 9.75" D Removable
LS1009013	17.125" W x 11.625" D Removable



Compact Rail

The Compact Rail can be attached to an IV pole to provide four 4.5" sides of connection for attaching additional accessories.

Equipment No.

LS1018004	38mm IV Pole Mount
LS1018005	25mm IV Pole Mount

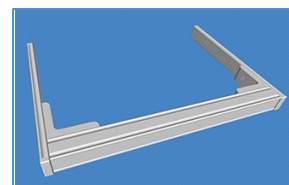


Cross Rail

The Cross Rail attaches to the vertical channel of equipment column and is used to attach accessories via horizontal rails.

Equipment No.

LS1022003	14" Front Cross Rail
LS1022004	18" Front Cross Rail
LS1022005	14" Front Cross Rail with 10" Side Rails (Image Shown)
LS1022006	18" Front Cross Rail with 10" Side Rails

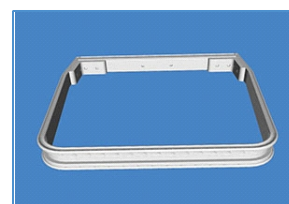


Surround Rail

The Surround Rail provides 360 degrees of accessory support around the HarmonyAIR™ column.

Equipment No.

LS1022001	14" Rear Surround Rail (Image Shown)
LS1022002	24" Rear Surround Rail



Heavy Duty Equipment Rail

The Equipment Rail attaches to a wall mount to provide flexibility to add snap-on accessories for equipment booms.

Equipment No.

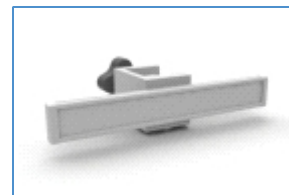
LS1002012	1' W, 2 Wall Mounting Holes
LS1002024	2' W, 2 Wall Mounting Holes
LS1002036	3' W, 3 Wall Mounting Holes
LS1002048	4' W, 3 Wall Mounting Holes
LS1002060	5' W, 4 Wall Mounting Holes
LS1002072	6' W, 5 Wall Mounting Holes
LS1002084	7' W, 6 Wall Mounting Holes
LS1002096	8' W, 6 Wall Mounting Holes
LS1002108	9' W, 7 Wall Mounting Holes
LS1002120	10' W, 8 Wall Mounting Holes



38mm Pole Mounted Rail

#LS1013019

The 38mm Pole Mounted Rail is used to attach snap-on accessories onto accessory poles.



Rail Mounting Hardware - Flush

The Flush Mounting Hardware is used for wall mounting rails to equipment booms.

Equipment No.

LS1004P01	Mounting for Metal Studs
LS1004P02	Mounting for Drywall
LS1004P03	Mounting for Masonry



Rail Mounting Hardware - Standoff

The Standoff Mounting Hardware is used for wall mounting heavy duty rails for equipment booms.

Equipment No.

LS1004P04	Mounting for Metal Studs
LS1004P05	Mounting for Drywall
LS1004P06	Mounting for Masonry

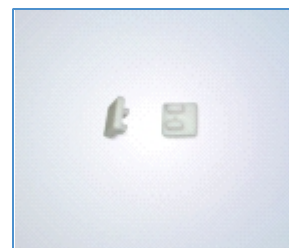


Equipment Rail End Caps

Rail End Caps are used to cover the ends of equipment boom rails.

Equipment No.

LS1002P01	Heavy Duty (Qty 2)
LS1003P01	Standard (Qty 2)

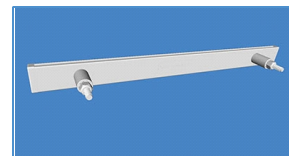


Replacement Side Rail Kits

Light Duty Side Rail Kit (includes hardware). Order as replacement for existing rails only.

Equipment No.

LS1022008	14" for Standard 17" Shelf (Image Shown)
LS1022009	17" for Large 20" Shelf

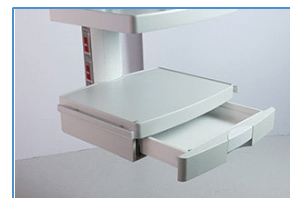


Equipment Shelves, Large - 25.6" W x 20.9" D

These shelves mount to the front rails of the HarmonyAIR™ equipment boom column to organize your surgical equipment. For additional storage, a HarmonyAIR™ Drawer Kit (shown in image) may be ordered separately.

Equipment No.

THSHEL11	Large Shelf Only, 110 lbs. max load
THSHEL12	Large Shelf with 2 Rails, 110 lbs max load
THSHEL14	Large Shelf with 2 Handles, 110 lbs max load
THSHEL16	Large Shelf with 2 Rails, 2 Handles, 110 lbs max load
THDRAWLG	Drawer Kit for Large Shelves (Includes 1 Drawer and Mounting Hardware)

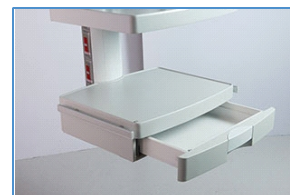


Equipment Shelves, Small - 17.7" W x 16.9" D

These shelves mount to the front rails of the HarmonyAIR™ equipment boom column to organize your surgical equipment. For additional storage, a HarmonyAIR™ Drawer Kit (shown in image) may be ordered separately.

Equipment No.

THSHES11	Small Shelf Only, 44 lbs max load
THSHES12	Small Shelf with 2 Rails, 44 lbs max load
THDRAWSM	Drawer Kit for Small Shelf (Includes 1 Drawer and Mounting Hardware)



Equipment Shelf with Drawer and Mousepad - 17.2" W x 14.2" D

This shelf mounts to the front rails of the HarmonyAIR™ equipment boom column and includes a drawer with a slide-out mousepad.

Equipment No.

THSHEL4106	Shelf with Drawer and Mousepad, 33 lbs max load"
------------	--



Smoke Evacuation System

Designed exclusively for the HarmonyAIR equipment boom, the equipment boom integrated HarmonyAIR Smoke Evacuation System provides ideal flow for operating rooms and outpatient surgery centers. It combines customizable and variable filter life, low total cost of ownership, and a 3-port filter with filter life tracking technology.

Equipment No.

QS0018 Small Shelf HarmonyAIR Smoke Evacuation System - 110V (shelf not included)

QS0020 Large Shelf HarmonyAIR Smoke Evacuation System - 110V (shelf not included)



Smoke Evacuation Filter

Designed to fit the HarmonyAIR Smoke Evacuation System with 4 layers of proven filtration: gross particulate, ULPA media, activated carbon, and post filter. Lasts up to 35 hours (approximately 3 months) of plume evacuation time and captures 0.1 to 0.2 micron particles at 99.999% efficiency. Hidden ports reduce the risk to caregivers of cross contamination.

Equipment No.

QS0022 Filter Two (2) Pack



Smoke Evacuation System Sterile Tubing

Sterile tubing available in the most common and versatile hose size of 7/8" (22mm) in diameter and lengths of 6 ft (1.8m), 10 ft (3.1m), or 14 ft (4.3m).

Equipment No.

QS0023 Tubing 7/8" (22mm) x 6 feet (1.8m) - 24 Per Box

QS0024 Tubing 7/8" (22mm) x 10 feet (3.1m) - 24 Per Box

QS0025 Tubing 7/8" (22mm) x 14 feet (4.3m) - 5 Per Box



Smoke Evacuation System Laparoscopic Tubing

Laparoscopic tubing easily connects from a standard trocar to the HarmonyAIR Smoke Evacuation System for active, efficient, and safe removal of surgical plume during laparoscopic procedures.

Equipment No.

QS0026 Laparoscopic Tubes - 12 Per Box



Smoke Evacuation Fluid Filter Trap

The translucent design captures fluids to help maintain the integrity of the filtration system and assist with maintaining filter life. Includes measurement increments (holds up to 100 cc fluid capacity) and cap holder for easy storage during use.

Equipment No.

QS0027 Filter Fluid Trap - 10 Per Box



Smoke Evacuation System Remote Switch Activator

The Remote Switch Activator device remotely turns the HarmonyAIR Smoke Evacuation System on and off in conjunction with ESU activation saving filter life. Adjustable delay can be set from 0 to 10 seconds, allowing for capture of residual plume that may be present after deactivation of electrosurgery devices.

Equipment No.

QS0028

Remote Switch Activator



TAD™ IV Transfer System

The TAD™ IV Transfer System enables safe movement of infusion and other pole mounted equipment from a stationary position on a wall or boom to a hospital bed, and vice versa. The TAD™ system consists of four elements: a transfer device with IV pole, a bed attachment arm with transfer cone, a headwall or column attachment arm with transfer cone, and a mobile docking station also with a transfer cone.

Equipment No.

LS1035205 TAD™ Mobile Docking Station

TAD™ IV Transfer System - Bed Adaptors

Equipment No.

LS1035221	TAD™ Bed Adaptor for Stryker In Touch Bed with Cone
LS1035220L	TAD™ Bed Adaptor for Stryker Epic II Zoom Bed w/Cone (Left)
LS1035220R	TAD™ Bed Adaptor for Stryker Epic II Zoom Bed w/Cone (Right)
LS1035222	TAD™ Bed Adaptor for Hill Rom Total Care with Cone



TAD™ IV Transfer System - Boom Adaptors

Equipment No.

LS1035208	TAD™ Boom Adaptors for Draeger Vertical Channel w/Arm and Cone
LS1035209	TAD™ Boom Adaptors for STERIS HarmonyAIR™ equipment boom w/Arm and Cone
LS1035207	TAD™ Mount for 388mm Pole with Arm and Cone
LS1035205	TAD™ Mobile Docking Station



TAD™ IV Transfer System - IV Poles

Equipment No.

LS1035201	TAD™ Single IV Pole 27" Long, 4 Hook
LS1035202	TAD™ Triple IV Pole, 27" Long, 8 Hangers

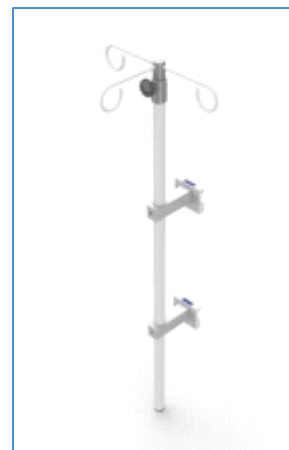


IV Poles, Single with Extensions, Double Rail Mount

The Double Rail Mounted Single IV Poles have a 20" telescoping extension and include three hooks for IV fluid bags. Two horizontal rails are required for mounting. Cross Rails or Equipment Side Rails may be used. Rails are sold separately.

Equipment No.

LS1014003	36" L IV Pole
LS1014004	48" L IV Pole



IV Poles, Single with Extensions, Single Rail Mount

The Single Rail Mounted IV Poles have a short block fixed mount and include a telescoping extension and three hooks for IV bags. One horizontal Cross Rail or Equipment Rail is required for mounting. Rails are sold separately.

Equipment No.

LS1014005	16" L IV Pole with 10" L Extension
LS1014006	24" L IV Pole with 15" L Extension
LS1014007	30" L IV Pole with 20" L Extension



IV Poles, 36" L with Extensions, Swivel Mount

The 36" L IV Poles have a 20" L telescoping extension with swivel mount. The swivel mount has a snap action adapter to attach to horizontal rails. Horizontal rails are sold separately.

Equipment No.

- LS1014001 Single IV Pole with 10" L Swivel Arm
- LS1014002 Double IV Pole with 12" L Swivel Arm



IV Extension Arm

The IV Extension Arm can be used to extend the distance of the 1" diameter IV poles out from the EMS column.

Equipment No.

- LS1018075 32" L, Fits Ø25mm IV Pole w/Front Column Mount for Harmony™ EMS equipment boom
- LS1014015 20" L, Fits Ø38mm IV Pole w/Vertical Column Channel Mount for Harmony™ EMS equipment boom
- LS1014008 32" L, Fits Ø25mm IV Pole w/Ø38mm Pole Mount for Harmony Nexus™ equipment boom
- LS1014010 12" L, Fits Ø38mm IV Pole w/Ø38mm Pole Mount for Harmony Nexus™ equipment boom
- LS1018061 Fixed Mount IV Pole Extension Arm
- LS1018066 Adapter to Add 2nd IV Pole to Existing IV Pole

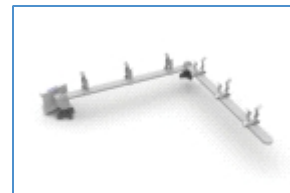


Cable Management Extension Arm

The Cable Management Extension Arm attaches to equipment boom columns via an Equipment Rail. This Extension Arm extends 32" out from the column and is used to manage patient leads and hoses. Equipment Rail sold separately.

Equipment No.

- LS1018068



IV Pump Rail Mount Pole

The 6" IV Pump Rail Mount Pole attaches via an Equipment Rail and is used for IV pumps. Equipment Rail sold separately.

Equipment No.

- LS1014P11

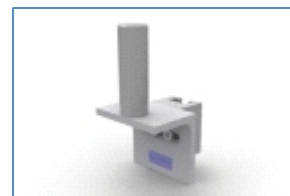


IV Pole Mounting Posts and Holders

The IV Pole Mounting Posts and Holders are used with 1" diameter IV poles.

Equipment No.

- LS1018074 3" H, Mounts to Harmony EMS Vertical Channel
- LS1013024 4" H, Mounts to Equipment Rail
- LS1013022 Universal IV Pole Holder for Ø25mm - Ø38mm poles
- LS1018062 Block for Mounting IV Pole to Equipment Rail



Pump Support

#THPUM6128

Pump Support, Double Pole, 28mm Diameter for HarmonyAIR™



Gas Hoses: DISS - Chemetron

DISS-Chemetron gas hose assemblies of varying lengths with connector.

Equipment No.

LS1007005	24" L, Oxygen
LS1007008	24" L, Vacuum
LS1007011	24" L, Medical Air

Equipment No.

LS1007105	36" L, Oxygen
LS1007108	36" L, Vacuum
LS1007111	36" L, Medical Air

Equipment No.

LS1007205	48" L, Oxygen, 90° Connector
LS1007208	48" L, Vacuum, 90° Connector
LS1007211	48" L, Medical Air, 90° Connector



Gas Hoses: DISS - DISS

DISS-DISS gas hose assemblies of varying lengths with connector.

Equipment No.

LS1007001	24" L, Oxygen
LS1007002	24" L, Vacuum
LS1007003	24" L, Medical Air

Equipment No.

LS1007101	36" L, Oxygen
LS1007102	36" L, Vacuum
LS1007103	36" L, Medical Air

Equipment No.

LS1007202	48" L, Vacuum
LS1007203	48" L, Medical Air
LS1007218	48" L, Oxygen, 90° Connector
LS1007219	48" L, Vacuum, 90° Connector
LS1007220	48" L, Medical Air, 90° Connector



Gas Hoses: DISS - DISS Handnut

HarmonyAIR™ Equipment Boom DISS-DISS hand nut hose assemblies of varying lengths with connector.

Equipment No.

LS1007301	24" L, Oxygen, 90° Connector
LS1007302	24" L, Vacuum, 90° Connector
LS1007303	24" L, Medical Air, 90° Connector

Equipment No.

LS1007311	36" L, Oxygen, 90° Connector
LS1007312	36" L, Vacuum, 90° Connector
LS1007313	36" L, Medical Air, 90° Connector

Equipment No.

LS1007321	48" L, Oxygen, 90° Connector
LS1007322	48" L, Vacuum, 90° Connector
LS1007323	48" L, Medical Air, 90° Connector



Gas Hoses: DISS - Ohmeda

DISS-Ohmeda gas hose assemblies of varying lengths with connector.

Equipment No.

LS1007004 24" L, Oxygen

LS1007007 24" L, Vacuum

Equipment No.

LS1007104 36" L, Oxygen

LS1007107 36" L, Vacuum

Equipment No.

LS1007204 48" L, Oxygen, 90° Connector

LS1007207 48" L, Vacuum, 90° Connector

LS1007210 48" L, Medical Air, 90° Connector



Gas Hoses: DISS - Puritan

DISS-Puritan gas hose assemblies of varying lengths with connector.

Equipment No.

LS1007006 24" L, Oxygen

LS1007009 24" L, Vacuum

LS1007012 24" L, Medical Air

Equipment No.

LS1007106 36" L, Oxygen

LS1007109 36" L, Vacuum

LS1007112 36" L, Medical Air

Equipment No.

LS1007206 48" L, Oxygen, 90° Connector

LS1007209 48" L, Vacuum, 90° Connector

LS1007212 48" L, Medical Air, 90° Connector



Gas Blocks: 1/8" NPT

HarmonyAIR™ Equipment Boom Gas Blocks allow users to extend outlet location anywhere from a fixed point on a supply column or supply head to any rail location. Hose assembly is sold separately.

Equipment No.

LS1105001 Oxygen Single, Front Connect

LS1105011 Oxygen Single, Front Connect with Diss Side

LS1115001 Vacuum Single, Front Connect

LS1115006 Vacuum Single, Front Connect

LS1125011 Medical Air Single, Front Connect with Diss Side

Equipment No.

LS1205001 Oxygen Double Front Connect

LS1205111 Oxygen Double, Front Connect with 2 Diss Side

LS1215111 Vacuum Double, Front Connect with 2 Diss Side

LS1225001 Medical Air Double, Front Connect

LS1225011 Medical Air Double, Front Connect with 2 Diss Side



Gas Blocks: Chemetron

HarmonyAIR™ Equipment Boom Gas Blocks allow users to extend outlet location anywhere from a fixed point on a supply column or supply head to any rail location. Hose assembly is sold separately.

Equipment No.

LS1105004	Oxygen	Single, Front Connect
LS1105014	Oxygen	Single, Side Connect
LS1115004	Vacuum	Single, Front Connect
LS1125004	Medical Air	Single, Front Connect
LS1125014	Medical Air	Single, Side Connect

Equipment No.

LS1205004	Oxygen	Double, Front Connect
LS1205014	Oxygen	Double, Side Connect
LS1215004	Vacuum	Double, Front Connect
LS1225004	Medical Air	Double, Front Connect
LS1225014	Medical Air	Double, Side Connect



Gas Blocks: DISS

HarmonyAIR™ Equipment Boom Gas Blocks allow users to extend outlet location anywhere from a fixed point on a supply column or supply head to any rail location. Hose assembly is sold separately.

Equipment No.

LS1105002	Oxygen	Single, Front Connect
LS1105012	Oxygen	Single, Side Connect
LS1115002	Vacuum	Single, Front Connect
LS1125002	Medical Air	Single, Front Connect
LS1125012	Medical Air	Single, Side Connect

Equipment No.

LS1205002	Oxygen	Double, Front Connect
LS1205012	Oxygen	Double, Side Connect
LS1215002	Vacuum	Double, Front Connect
LS1225002	Medical Air	Double, Front Connect
LS1225012	Medical Air	Double, Side Connect



Gas Blocks: Ohmeda

HarmonyAIR™ Equipment Boom Gas Blocks allow users to extend outlet location anywhere from a fixed point on a supply column or supply head to any rail location. Hose assembly is sold separately.

Equipment No.

LS1105003	Oxygen	Single, Front Connect
LS1105013	Oxygen	Single, Side Connect
LS1115003	Vacuum	Single, Front Connect
LS1125003	Medical Air	Single, Front Connect
LS1125013	Medical Air	Single, Side Connect

Equipment No.

LS1205003	Oxygen	Double, Front Connect
LS1205013	Oxygen	Double, Side Connect
LS1215003	Vacuum	Double, Front Connect
LS1225003	Medical Air	Double, Front Connect
LS1225013	Medical Air	Double, Side Connect



Gas Blocks: Puritan

HarmonyAIR™ Equipment Boom Gas Blocks allow users to extend outlet location anywhere from a fixed point on a supply column or supply head to any rail location. Hose assembly is sold separately.

Equipment No.

LS1105005	Oxygen	Single, Front Connect
LS1105015	Oxygen	Single, Side Connect
LS1115005	Vacuum	Single, Front Connect
LS1125005	Medical Air	Single, Front Connect
LS1125015	Medical Air	Single, Side Connect

Equipment No.

LS1205005	Oxygen	Double, Front Connect
LS1205015	Oxygen	Double, Side Connect
LS1215005	Vacuum	Double, Front Connect
LS1225005	Medical Air	Double, Front Connect
LS1225015	Medical Air	Double, Side Connect



Gas Splitter Blocks: 1 Chemetron - 2 DISS Front

This Chemetron Gas Block Splitter is used to convert from 1 Chemetron port to 2 DISS front ports.

Equipment No.

LS1006009	Oxygen
LS500063	Vacuum
LS1006008	Medical Air



Gas Splitter Blocks: 1 DISS - 2 DISS Front

This DISS Gas Block Splitter is used to convert from 1 DISS port to 2 DISS ports.

Equipment No.

LS1006017	Oxygen
LS1006018	Vacuum
LS1006016	Medical Air



Gas Splitter Blocks: 1 Ohmeda - 2 DISS Front

This Ohmeda Gas Block Splitter is used to convert from 1 Ohmeda port to 2 DISS Ports.

Equipment No.

LS1006007	Oxygen
LS500066	Vacuum
LS1006005	Medical Air



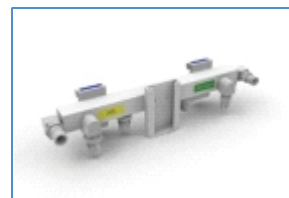
Ventilator Manifold with Blender

The Ventilator Manifold allows users to bring oxygen and air to one common point and attach a blender device (such as a Bird Blender). The blender device slides into the center of the adapter and blends oxygen and air for use in a ventilator. This blender manifold uses DISS connections and requires additional hose assemblies to bring gases into the manifold from the wall outlet. There are extra oxygen and air connections so that the gases may also be used individually even when the blender is utilized.

Equipment No.

LS1006001 2 Air, 2 Oxygen

LS1006002 3 Air, 3 Oxygen



Mounting Bracket for Bird Blender

The Mounting Bracket for Bird Blenders attaches to equipment boom column mounted equipment rails and are used in conjunction with Ventilator Manifolds sold separately.

Equipment No.

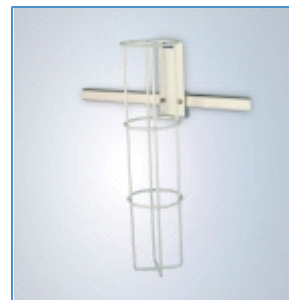
LS1013023



E-Cylinder Tank Holder

#LS1013015

The E-cylinder Tank Holder attaches to an equipment rail and holds E-sized cylinders up to 22-3/4" in height and 4-1/2" in diameter. Tank not included.



Argon Tank Holder

#LS1013035

The Argon Tank Holder mounts to equipment boom columns and provides optimal space management. Tank not included.



Monitor Holder - Single Articulation

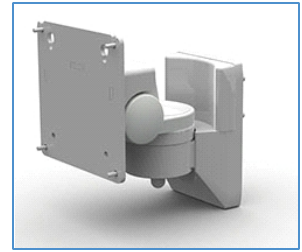
#THMON1111

Flat panel monitor holder, single articulation for HarmonyAIR™ Equipment Booms.

Rigid

VESA 75 or 100

Load capacity: 17.6 lbs.



Monitor Holder - Single Articulation

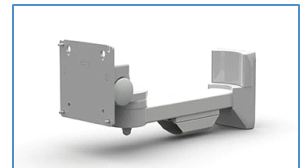
#THMON2111

Flat panel monitor holder, single articulation for HarmonyAIR™ Equipment Booms.

Arm length: 7.6 in.

VESA 75 or 100

Load capacity: 17.6 Lbs.



Monitor Holder - Double Articulation

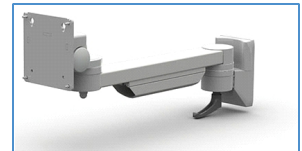
#THMON3111

Flat panel monitor holder, double articulation for HarmonyAIR™ Equipment Booms.

Arm length: 12.6 in.

VESA 75 or 100

Load capacity: 30.8 lbs.



Monitor Holder - Double Articulation

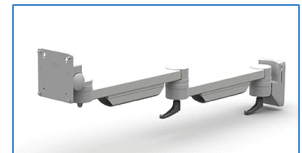
#THMON4111

Monitor holder, double articulation for HarmonyAIR™ Equipment Booms.

Arm length: 12.6 in. - 12.6 in.

VESA 75 or 100

Load capacity: 33 lbs.



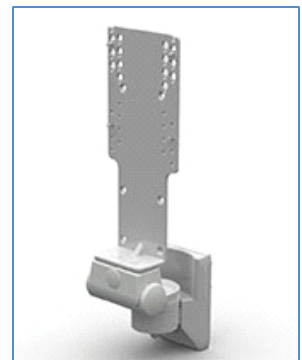
Monitor Holder - Single Articulation

#THMON1113

Flat panel monitor holder, single articulation for HarmonyAIR™ Equipment Booms.

VESA 75 or 100

Load capacity: 30.8 lbs.



Monitor Holder - Double Articulation

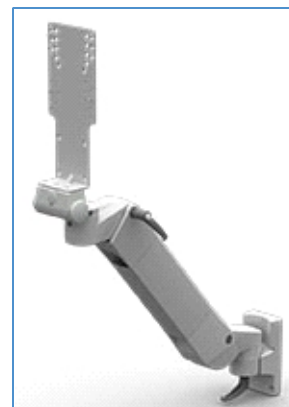
#THMON3323

Monitor holder, double articulation with height adjustment (spring) for HarmonyAIR™ Equipment Booms.

Depth adjustable

Arm length: 15.8 in.

VESA 75 or 100



Monitor Holder - Double Articulation with Keyboard Holder

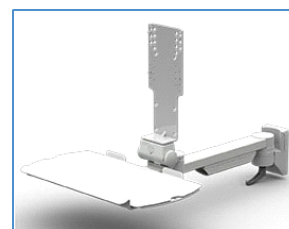
#THMON3163

Flat panel monitor holder, double articulation with keyboard holder and mouse support for HarmonyAIR™ Equipment Booms.

Arm length: 12.6 in.

VESA 75 or 100

Load capacity: 30.8 lbs.



Monitor Holder - Triple Articulation

#THMON4163

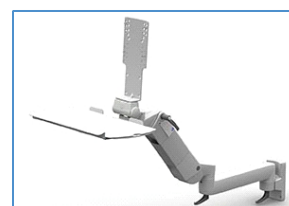
Flat panel monitor holder, triple articulation with keyboard and mouse support for HarmonyAIR™ Equipment Booms.

Height adjustment (spring)

Arm length: 15.8 in.

VESA 75 or 100

Load capacity: 6.6 - 22.0 lbs.



Monitor Holder - Single Articulation

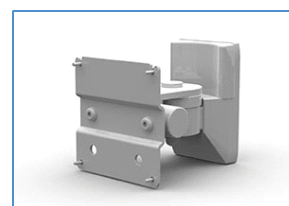
#THMON1115

Flat panel monitor holder, single articulation for HarmonyAIR™ Equipment Booms.

Vertical tilt

VESA 100

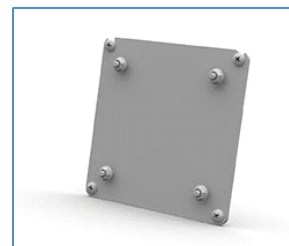
Load capacity: 39.6 lbs.



VESA 100 Adaptor

#THOPT004

VESA 100 to VESA 75 Adaptor for THMON1115 Monitor Holder.



Monitor Holder - Double Articulation

#THMON3311

Flat panel monitor holder, double articulation, height adjustment (spring) for HarmonyAIR™ Equipment Booms.

Arm length: 15.8 in.

VESA 75 or 100

Load capacity: 6.6 - 22.0 lbs.



Monitor Holder - Double Articulation

#THMON3313

Flat panel monitor holder, double articulation, height adjustment (spring) for HarmonyAIR™ Equipment Booms.

Arm length: 15.8 in.

VESA 75 or 100

Load capacity: 17.6 - 30.8 lbs.



Monitor Holder - Double Articulation

#THMON3211

Flat panel monitor holder, double articulation, height adjustment (spring) for HarmonyAIR™ Equipment Booms.

Arm length: 23.6 in.

VESA 75 or 100

Load capacity: 6.6 - 22.0 lbs.



Monitor Holder - Double Articulation

#THMON3212

Flat panel monitor holder, double articulation, height adjustment (spring) for HarmonyAIR™ Equipment Booms.

Arm length: 23.6 in.

VESA 75 or 100

Load capacity: 17.6 - 30.8 lbs.



Monitor Holder - Triple Articulation

#THMON4211

Flat panel monitor holder, triple articulation, height adjustment (spring) for HarmonyAIR™ Equipment Booms.

Arms length: 15.8 in. - 13.8 in.

VESA 75 or 100

Load capacity: 6.6 - 22.0 lbs.



Monitor Holder - Triple Articulation

#THMON4212

Monitor holder, triple articulation, height adjustment (spring) for HarmonyAIR™ Equipment Booms.

Arms length: 15.8 in - 13.8 in.

VESA 75 or 100

Load capacity: 17.6 - 30.8 Lbs.



Monitor Holder - Single Articulation

#THMON2123

Flat panel monitor holder, single articulation for HarmonyAIR™ Equipment Booms.

Depth adjustable

Arm length: 7.6 in.

VESA 75 or 100

Load capacity: 30.8 lbs.



Monitor Holder - Double Articulation

#THMON3123

Flat panel monitor holder, double articulation for HarmonyAIR™ Equipment Booms.

Depth adjustable

Arm length: 12.6 in.

VESA 75 or 100

Load capacity: 30.8 lbs.



Monitor Holder - Triple Articulation

#THMON4123

Flat panel monitor holder, triple articulation for HarmonyAIR™ Equipment Booms.

Depth adjustable

Arms length: 12.6 in - 12.6 in

VESA 75 or 100

Load capacity: 30.8 lbs.



Monitor Holder - Single Articulation

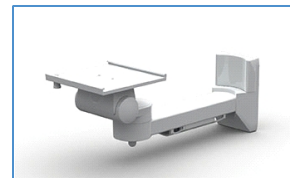
#THMON2133

Monitor holder, single articulation for HarmonyAIR™ Equipment Booms.

Arm length: 7.6 in.

Sliding assembly

Load capacity: 30.8 lbs.



Monitor Holder - Double Articulation

#THMON3133

Monitor holder, double articulation for HarmonyAIR™ Equipment Booms.

Arm length: 12.6 in.

Sliding assembly

Load capacity: 30.8 lbs.



Monitor Holder - Double Articulation

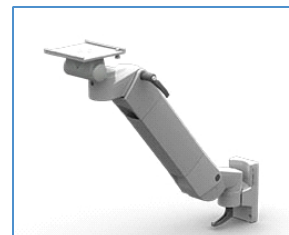
#THMON3333

Monitor holder, double articulation with height adjustment (spring) for HarmonyAIR™ Equipment Booms.

Arm length: 15.8 in.

Sliding assembly

Load capacity: 17.6 - 30.8 lbs.



Monitor Holder - Triple Articulation

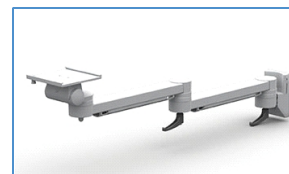
#THMON4133

Monitor holder, triple articulation for HarmonyAIR™ Equipment Booms.

Arms length: 12.6 in. - 12.6 in.

Sliding assembly

Load capacity: 30.8 lbs.



Monitor Holder - Triple Articulation

#THMON2218

Flat panel monitor, triple articulation, height adjustment (spring) for HarmonyAIR™ Equipment Booms.

Arms length: 11.8 in. - 13.8 in.

VESA 75 or 100

Load capacity: 6.6 - 22.0 lbs.

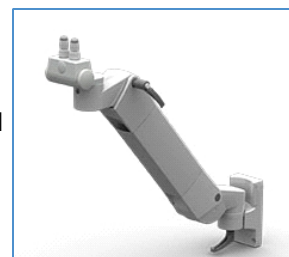


Philips Monitor Support Arm

Equipment No.

THMON2144 Philips Patient Monitor Arm, Adj, 5.0in. Arm Length, 31 Lbs. max load

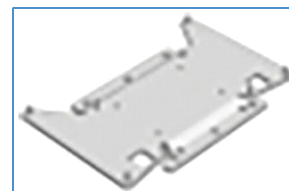
THMON3344 Philips Patient Monitor Arm, Adj, 15.8in. Arm Length, 31 Lbs. max load



Monitor Adaptor for Nihon Kohen

#THOPT005

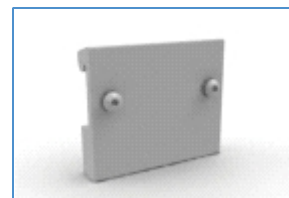
Monitor Adaptor with Sliding Assembly Adaptor for Nihon Kohen



Adapter for Sharps Holder

#LS500085

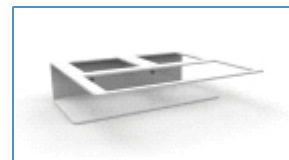
The adapter for Sharps disposal containers attaches to an equipment rail for easy access. Sharps disposal container not included.



Baxter Bulb Tray Holder

#LS2001010

The Baxter Bulb Tray Holder mounts to an equipment rail for easy access. Baxter bulbs not included.

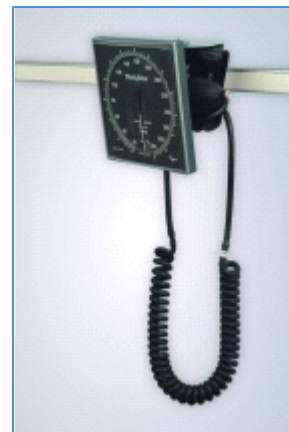


Blood Pressure Cuff Holder

The Blood Pressure (BP) Cuff Holders include a mounting kit and attach to an equipment rail for easy access. Blood Pressure cuffs not included.

Equipment No.

LS1012002	BP Cuff Holder
LS1012P03	U-Shaped BP Cuff Holder
LS1012P04	BP Cuff Basket



Catheter Holders

The Catheter Holder attaches to an equipment rail for easy access. Catheters not included.

Equipment No.

LS1013005	Small Holder 7" W x 5" D x 7" H
LS1013006	Long Holder 6" W x 4" D x 18" H



Antiseptic Handrub and Disinfectant Wipes Mounted Holders

The Disinfectant Wipes Holder attaches to an equipment rail for easy access. Antiseptic handrub and disinfectant wipes not included.

Equipment No.

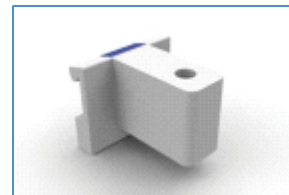
LS1018S02	for 17 oz Alcure Plus® Antiseptic Handrub
LS1018S03	for 9 oz Alcure Plus® Antiseptic Handrub
LS1018S01	for Coverage® and Coverage Plus® Germicidal Surface Wipes



Flex Arm Respiratory Circuit Holder

#LS1013028

The Flex Arm Respiratory Circuit Holder attaches to an equipment rail for easy access. Respiratory circuit not included.

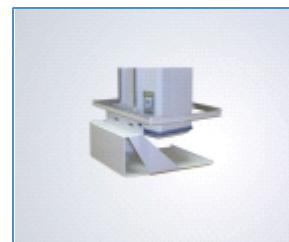


Foot Pedal Holder

The Foot Pedal Holder attaches to the bottom of Harmony EMS equipment boom columns to allow additional secure, yet easily accessed storage space for foot pedals when not in use. Can also be used to store integration boxes or CPUs.

Equipment No.

LS1018121	Rear Facing 15" W x 18" D x 7" H
LS1018121B	Rear Facing 20" W x 20" D x 8.5" H
LS1018129	Forward Facing 18" W x 18" D x 7" H

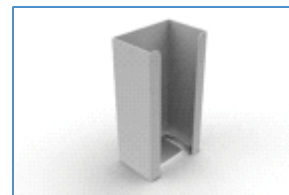


Glove Box Holder

The Glove Box Holder attaches to an equipment rail for easy access. Gloves not included.

Equipment No.

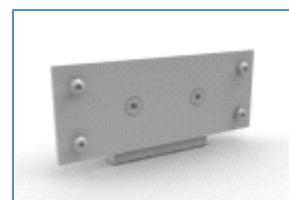
LS1013002	for 1 Glove Box
LS1013003	for up to 2 Glove Boxes
LS1013034	for up to 3 Glove Boxes, Adjustable Width and Height



Ophthalmoscope Holder, Welch Allyn 767 Series

#LS1013011

The Welch Allyn 767 Series Ophthalmoscope Holder attaches to an equipment rail for easy access. Scope not included.



Speculum Container Holder

#LS1013012

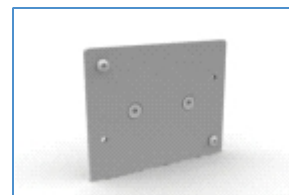
The Speculum Container Holder attaches to an equipment rail for easy access. Speculum not included.



Thermometer Holder

#LS1013045

The Welch Allyn Thermometer Holder attaches to an equipment rail for easy access. Thermometer not included.



Transducer Holder

#LS1013025

The Transducer Holder has variable height adjustability with 23.75" L pole. It attaches to an equipment rail for easy access. Transducer not included.



Universal Manometer Holder

#LS1013016

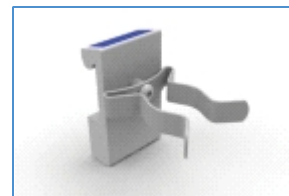
The Universal Manometer Holder attaches to an equipment rail for easy access. Manometer not included.



Universal Resuscitator Holder

#LS1013004

The Universal Resuscitator Holder attaches to an equipment rail. Resuscitator bag not included.



Universal Sharps Container Holder

#LS1013009

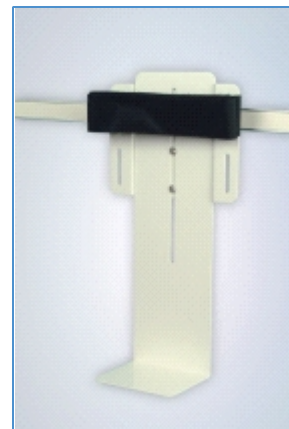
The Universal Sharps container Holder attaches to an equipment rail for easy access. Sharps Container not included.



Universal Waste Basket Holder

#LS1013021

The Universal Waste Basket Holder attaches to an equipment rail for easy access. Waste Basket not included.



Vacuum Bottle Slide Holder

#LS1008001

The Vacuum Bottle slide snap action mounting adapter holds a surgical fluid canister. Plastic disposable holder and vacuum bottle not included.



Snap Action Mounting Adapter

The Snap Action Mounting Adapters has 2 holes and attaches to an equipment rail to allow mounting options for support equipment.

Equipment No.

- LS1001001 with Vertical Holes
- LS1001002 with Horizontal Holes



Double Snap Action Adapter

The Double Snap Action Adapter attaches to an equipment rail to allow mounting options for support equipment. Adapter is 3" W and can be snapped onto the equipment rail or attached with an Allen wrench.

Equipment No.

LS1001012 with 2 Holes

LS1001011 with 4 Holes



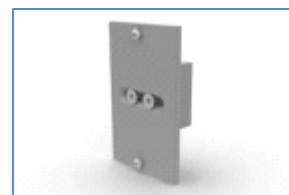
Telephone Mounting Plate

The Telephone Mounting Plate is used to attach a telephone to a Harmony EMS column. Telephone not included.

Equipment No.

LS1018073 attaches to Vertical Channel

LS1013027 attaches to Horizontal Equipment Rail



Hose and Cable Clip Organizer

The Hose and Cable Clip Organizer attaches to an equipment rail and is used to organize hoses and cables to prevent trip hazards.

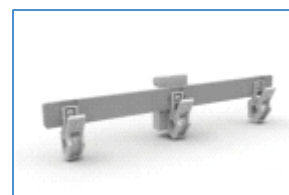
Equipment No.

LS1013033 includes 3 Clips with Snap Action Adapter

LS1013007 includes 3 Clips without Snap Action Adapter

LS1013029 includes 6 Clips with Snap Action Adapter

LS1013008 includes 6 Clips without Snap Action Adapter



Waldmann Task Light 50sx

The Task Light and Halux LED Lamp for additional lighting support (Image Shown is LS1015004)

Equipment No.

LS1015004 Waldmann Task Light 50sx

LS1015025 Waldmann Halux LED 20 Lamp



Task Light Support

The Task Light Support attaches to equipment side rails. Task Light not included.

Equipment No.

LS1015002 Burton Lamp Mounting Holder

LS1015001 Luxo Lamp Mounting Holder

LS1015003 Waldmann Lamp Mounting Holder

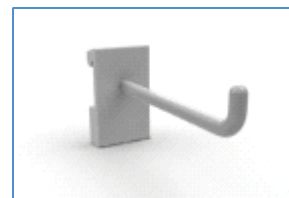


Utility Hook

The Utility Hook attaches to equipment rails for improved organization. Optional clips are available to hold documents, manage patient leads, or additional accessories.

Equipment No.

LS1013013	Single Hook
LS1013113	Single Hook with 3 Clips
LS1013014	Triple Hooks
LS1013114	Triple Hooks with 9 Clips

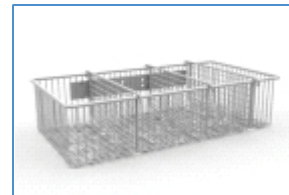


Utility Basket

The Utility Basket attaches to equipment rails and is used to organize a multitude of supplies.

Equipment No.

LS1011001	6.5" W x 4" D x 7" H
LS1011002	10" W x 6" D x 4" H
LS1011003	18"W x 9"D x 4" H with 3 Adjustable Dividers
LS1013001	10"W x 13" H Chart Holder



Storage Basket

#THOPT0291

Wire Storage Basket attaches to vertical HarmonyAIR™ equipment boom column.



Stainless Steel Storage Basket

#THOPT9893

Stainless Steel Storage Basket attaches to vertical HarmonyAIR™ equipment boom column.



Computer Holders

Computer Holders HarmonyAIR™ equipment booms are dimensioned for computers in different sizes. Two silicon belts guarantee individual adaptability and secure mounting for computers. Includes mounting hardware.

Equipment No.

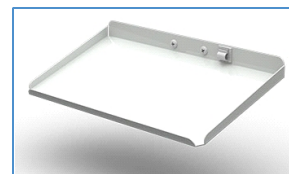
THCOM6144	Small, 11 lbs max load
THCOM6146	Large, 44 lbs max load



Keyboard Holder

#THKEY112

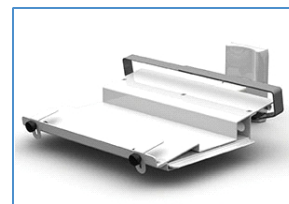
Keyboard Holder for HarmonyAIR™ equipment booms, fixed, fits standard keyboards, 11 lbs max load; could also be used as a half shelf for holding fluids.



Laptop Holder with Mousepad

#THKEY113

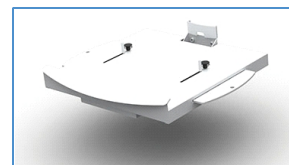
Laptop Holder with Mousepad for HarmonyAIR™ equipment booms, 22 lbs max load



Keyboard Drawer with Mousepad

#THKEY121

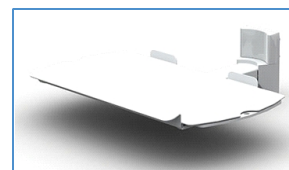
Keyboard Drawer with Mousepad (left/right) for HarmonyAIR™ equipment booms, 6.6 lbs max load



Keyboard and Mouse Support

#THKEY131

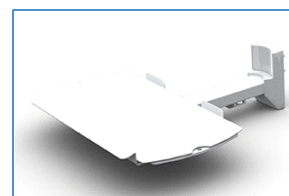
Keyboard and Mouse Support for HarmonyAIR™ equipment booms, 15.9" Arm Length, 11 lbs max load



Keyboard and Mouse Support

#THKEY111

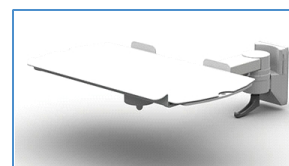
Keyboard and Mouse Support for HarmonyAIR™ equipment booms, 18.4" Arm Length, 11 lbs. max load



Keyboard and Mouse Support

#THKEY311

Keyboard and Mouse Support on Single Pivot Arm for HarmonyAIR™ equipment booms, 21.4" Arm Length



Keyboard and Mouse Support

#THKEY411

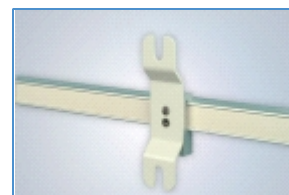
Keyboard and Mouse Support on Double Pivot Arm for HarmonyAIR™ equipment booms, 35.1" Arm Length



Cable Management Cord Wrap Mount

#LS1013026

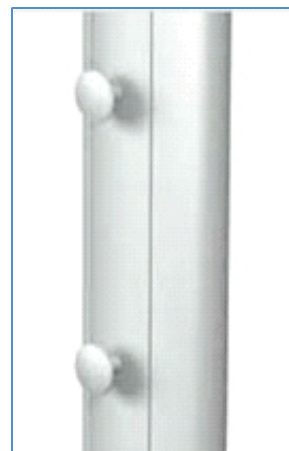
Cable Management Cord Wrap Mount attaches to an equipment rail to prevent cord trip hazards on the floor.



Cable Winders

#THOPT2004

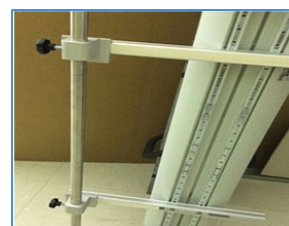
Cable Winders (2) with Cover Strip for HarmonyAIR™ equipment booms, includes Mounting Hardware



Pole for Bair Hugger

#LS1022010

25mm Pole for Bair Hugger with pole clamp. Mounts between two shelves.



Bair Hugger Shelf

#LS1022011

Bair Hugger shelf, vertical rail mounting.



Harmony® LED 385 Ceiling Mount Package

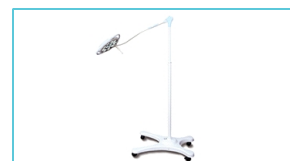
#LED30

The Harmony LED 385 Exam Light features bright luminous intensity delivered in an ultra-slim, compact design used in procedure and exam rooms, ER/trauma departments, labor and delivery suites, and ICU rooms. Includes Ceiling Package, Spring Arm w/Horizontal Extension Arm, and H385 Lighthead for Exam.

Harmony® LED 385 Mobile Stand Package

#LED31

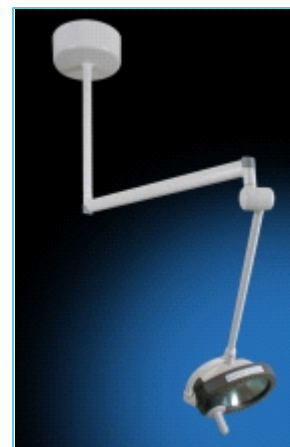
The Harmony LED 385 Exam Light features bright luminous intensity delivered in an ultra-slim, compact design used in procedure and exam rooms, ER/trauma departments, labor and delivery suites, and ICU rooms. Includes Mobile Stand System, Spring Arm w/Vertical Tube, H385 Lighthead for Exam, and North America Cord Kit.



Harmony® LA 300 Ceiling Mount Package

#LA30

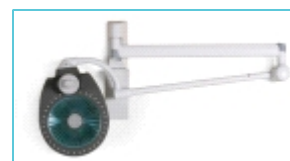
The Harmony LA 300 Exam Light is designed specifically for minor procedures in an ICU or ER. The LA 300 provides high-intensity lighting and its compact ceiling-mount option can be installed anywhere procedure lighting is necessary. Includes Ceiling Package, Spring Arm w/Horizontal Extension Arm, and H300 Lighthead for Exam.



Harmony® LA 300 Wall Mount Package

#LA31

The Harmony LA 300 Exam Light is designed specifically for minor procedures in an ICU or ER. The LA 300 provides high-intensity, color-corrected lighting and its compact wall-mount option can be installed anywhere procedure lighting is necessary. Includes Wall Mount Kit, Spring Arm w/Horizontal Extension Arm, and H300 Lighthead for Exam.



Harmony® LA 300 Mobile Stand Package

#LA32

The Harmony LA 300 Exam Light is designed specifically for minor procedures in an ICU or ER. The LA 300 provides high-intensity, color-corrected lighting and its mobile option can be utilized anywhere procedure lighting is necessary. Includes Mobile Stand System, Spring Arm w/Vertical Tube, H300 Lighthead for Exam, and North America Cord Kit.



Harmony® LA 300 Replacement Lamp

#LA21

Replacement lamp for Harmony LA 300 Exam Lights.

Amsco® Examiner® 10 Examination Lights

The Amsco® Examiner® 10 Examination Lighting System illuminates with brilliant intensity for accurate diagnosis and treatment in physician offices, clinics, emergency rooms, nursing homes, and veterinarian offices. Available in wall-mounted, ceiling-mounted, or mobile unit options.

Equipment No.

AS3122	Wall-mounted with 14" Extension Arm
AS3124	Ceiling-mounted without 14" Extension Arm, Single Lighthead
AS3133	Ceiling-mounted with 14" Extension Arm, Single Lighthead
AS3533	Ceiling-mounted with 14" Extension Arm, Dual Lighthead
AS3135	Mobile Unit, 34" W Base, 67" H Stand



Amsco® LD-202 In-Ceiling Lighting System

The Amsco LD202 lighthead system was designed for the special needs of labor and delivery. The low profile style helps keep the light source directed away from the patient's eyes and focused where the caregiver needs it. 2' x 2' recessed fixtures provide an uncluttered environment while easy-to-use wall-mounted controls provide 5 levels of light intensity.

Equipment No.

AS71060000060030	Single Lighthead
AS70060000060030	Dual Lighthead



Re-sterilizable Plastic In-light Handle

#LB20

These plastic handles are compatible with all Harmony Surgical Light models including the Harmony 300 Exam Light. They allow for quick and easy application and secure fit of the blue Disposable Light Handle Covers (#LB53 - sold separately) with surgeon control.



Re-sterilizable Aluminum In-light Handle without Surgeon Control

#LB22

These aluminum handles are compatible with all Harmony Surgical Light models including the Harmony 300 Exam Light. They are a cost-effective solution for cases not requiring dimming or adjustment of light intensity from the sterile field. They allow for sterile control of pattern size.



Re-sterilizable Aluminum In-light Handle with Surgeon Control

#LB23

These aluminum handles are compatible with all Harmony Surgical Light models including the Harmony 300 Exam Light. They allow for sterile control of power on/off, intensity levels and pattern size. Silicone insert withstands ~1,000 sterilization cycles.



Silicone Insert Ring for #LB23 Re-sterilizable In-light Handle with Surgeon Control

#LB24

Clear, sterilizable, silicone ring replacements for Re-sterilizable Aluminum In-light Handles with Surgeon Control (#LB23 - sold separately).



Disposable Sterile Light Handle Cover

#LB53

These blue, light handle covers are compatible with all Harmony Surgical Light models including the Harmony 300 Exam Light. They provide sterile control of power on/off, intensity levels and pattern size and eliminate the need for cleaning and sterilizing of handles for every case. Individually packaged, 120 unit count.



Disposable Sterile Light Handle Camera Cover

#LB54

These blue, light handle camera covers are compatible with all Harmony standard definition and high definition in-light cameras. They provide sterile surgeon control and eliminate the need for cleaning and sterilizing of handles for every case. Individually packaged, 30 per case.



Harmony® LED 385 Sterilizable Handle - Replacement

#LB57

These replacement handles are only compatible with Harmony 385 LED Exam Lights. They provide sterile control of power on/off, intensity levels and positioning.



Harmony® In-light Camera Options

Equipment No.

LB001	Harmony Light Handle Camera Module, NTSC Format
LHD0002	HD Camera Light Handle Module
LHD0013	Camera Case for HD and SD Camera



Harmony® ConnectPoint™ System for HD LED, LED and vLED Systems

Harmony® ConnectPoint™ System provide power and video signal connections from a flexible arm attached to any STERIS surgical lighting system. With factory tested pre-wired arms, the Harmony ConnectPoint system is designed for durability and reliability. The Harmony ConnectPoint solution can be added at any time as your room needs evolve.

Equipment No.

LB0016	for HD LED or LED Systems
LB0017	with 2000 Adapter for vLED Single Monitor Arm System
LB0018	with 3000 Adapter for vLED Dual Side-by-Side Monitor Arm System



Harmony® HD LED or LED Ambient Light Kit #LB18

The Ambient Light Ring can be added on to your Harmony® LED Surgical Lighting and Visualization Systems at any time. This soft green light provides excellent low level illumination during minimally invasive procedures or situations where the room lighting is very low. The Ambient Light Ring provides enough supplemental illumination to enhance staff and patient safety.



Description	Item	Page No.
38mm Pole Mounted Rail	LS1013019	5
Adapter for Sharps Holder	LS500085	24
Amsco® Examiner® 10 Examination Lights Ceiling-mounted with 14" Extension Arm, Dual Lighthead	AS3533	32
Amsco® Examiner® 10 Examination Lights Ceiling-mounted with 14" Extension Arm, Single Lighthead	AS3133	32
Amsco® Examiner® 10 Examination Lights Ceiling-mounted without 14" Extension Arm, Single Lighthead	AS3124	32
Amsco® Examiner® 10 Examination Lights Mobile Unit, 34" W Base, 67" H Stand	AS3135	32
Amsco® Examiner® 10 Examination Lights Wall-mounted with 14" Extension Arm	AS3122	32
Amsco® LD-202 In-Ceiling Lighting System Dual Lighthead	AS70060000060030	32
Amsco® LD-202 In-Ceiling Lighting System Single Lighthead	AS71060000060030	32
Angled Shelves 13" W x 8" D without Velcro	LS1009006	4
Angled Shelves 13" W x 8" D with Velcro	LS1009015	4
Angled Shelves 8" W x 8" D with Velcro	LS1009014	4
Angled Shelves 8" W x 8" D without Velcro	LS1009005	4
Antiseptic Handrub and Disinfectant Wipes Mounted Holders for 17 oz Alcure Plus®	LS1018S02	24
Antiseptic Handrub		
Antiseptic Handrub and Disinfectant Wipes Mounted Holders for 9 oz Alcure Plus®	LS1018S03	24
Antiseptic Handrub		
Antiseptic Handrub and Disinfectant Wipes Mounted Holders for Coverage® and Coverage Plus® Germicidal Surface Wipes	LS1018S01	24
Argon Tank Holder	LS1013035	18
Bair Hugger Shelf	LS1022011	30
Baxter Bulb Tray Holder	LS2001010	24
Blood Pressure Cuff Holder BP Cuff Basket	LS1012P04	24
Blood Pressure Cuff Holder BP Cuff Holder	LS1012002	24
Blood Pressure Cuff Holder U-Shaped BP Cuff Holder	LS1012P03	24
Cable Management Cord Wrap Mount	LS1013026	29
Cable Management Extension Arm	LS1018068	12
Cable Winders	THOPT2004	30
Catheter Holders Long Holder 6" W x 4" D x 18" H	LS1013006	24
Catheter Holders Small Holder 7" W x 5" D x 7" H	LS1013005	24
Compact Rail 25mm IV Pole Mount	LS1018005	5
Compact Rail 38mm IV Pole Mount	LS1018004	5
Computer Holders Large, 44 lbs max load	THCOM6146	28
Computer Holders Small, 11 lbs max load	THCOM6144	28
Cross Rail 14" Front Cross Rail	LS1022003	5
Cross Rail 14" Front Cross Rail with 10" Side Rails (Image Shown)	LS1022005	5
Cross Rail 18" Front Cross Rail	LS1022004	5
Cross Rail 18" Front Cross Rail with 10" Side Rails	LS1022006	5
Disposable Sterile Light Handle Camera Cover	LB54	34
Disposable Sterile Light Handle Cover	LB53	33
Double Snap Action Adapter with 2 Holes	LS1001012	27
Double Snap Action Adapter with 4 Holes	LS1001011	27
E-Cylinder Tank Holder	LS1013015	18
Equipment Rail End Caps Heavy Duty (Qty 2)	LS1002P01	6
Equipment Rail End Caps Standard (Qty 2)	LS1003P01	6
Equipment Shelf with Drawer and Mousepad - 17.2" W x 14.2" D Shelf with Drawer and Mousepad, 33 lbs max load	THSHEL4106	7
Equipment Shelves, Large - 25.6" W x 20.9" D Drawer Kit for Large Shelves (Includes 1 Drawer and Mounting Hardware)	THDRAWLG	7
Equipment Shelves, Large - 25.6" W x 20.9" D Large Shelf Only, 110 lbs. max load	THSHEL11	7
Equipment Shelves, Large - 25.6" W x 20.9" D Large Shelf with 2 Handles, 110 lbs max load	THSHEL14	7

Description	Item	Page No.
Equipment Shelves, Large - 25.6" W x 20.9" D Large Shelf with 2 Rails, 110 lbs max load	THSHEL12	7
Equipment Shelves, Large - 25.6" W x 20.9" D Large Shelf with 2 Rails, 2 Handles, 110 lbs max load	THSHEL16	7
Equipment Shelves, Small - 17.7" W x 16.9" D Drawer Kit for Small Shelf (Includes 1 Drawer and Mounting Hardware)	THDRAWSM	7
Equipment Shelves, Small - 17.7" W x 16.9" D Small Shelf Only, 44 lbs max load	THSHES11	7
Equipment Shelves, Small - 17.7" W x 16.9" D Small Shelf with 2 Rails, 44 lbs max load	THSHES12	7
Flat Shelves 10" W x 13" D	LS1009002	4
Flat Shelves 10" W x 8" D	LS1009001	4
Flat Shelves 13" W x 13" D	LS1009003	4
Flat Shelves 19" W x 13" D	LS1009004	4
Flex Arm Respiratory Circuit Holder	LS1013028	24
Foot Pedal Holder Forward Facing 18" W x 18" D x 7" H	LS1018129	25
Foot Pedal Holder Rear Facing 15" W x 18" D x 7" H	LS1018121	25
Foot Pedal Holder Rear Facing 20" W x 20" D x 8.5" H	LS1018121B	25
Gas Blocks: 1/8" NPT Medical Air Double, Front Connect	LS1225001	15
Gas Blocks: 1/8" NPT Medical Air Double, Front Connect with 2 Diss Side	LS1225011	15
Gas Blocks: 1/8" NPT Medical Air Single, Front Connect with Diss Side	LS1125011	15
Gas Blocks: 1/8" NPT Oxygen Double Front Connect	LS1205001	15
Gas Blocks: 1/8" NPT Oxygen Double, Front Connect with 2 Diss Side	LS1205111	15
Gas Blocks: 1/8" NPT Oxygen Single, Front Connect	LS1105001	15
Gas Blocks: 1/8" NPT Oxygen Single, Front Connect with Diss Side	LS1105011	15
Gas Blocks: 1/8" NPT Vacuum Double, Front Connect with 2 Diss Side	LS1215111	15
Gas Blocks: 1/8" NPT Vacuum Single, Front Connect	LS1115001	15
Gas Blocks: 1/8" NPT Vacuum Single, Front Connect	LS1115006	15
Gas Blocks: Chemetron Medical Air Double, Front Connect	LS1225004	16
Gas Blocks: Chemetron Medical Air Double, Side Connect	LS1225014	16
Gas Blocks: Chemetron Medical Air Single, Front Connect	LS1125004	16
Gas Blocks: Chemetron Medical Air Single, Side Connect	LS1125014	16
Gas Blocks: Chemetron Oxygen Double, Front Connect	LS1205004	16
Gas Blocks: Chemetron Oxygen Double, Side Connect	LS1205014	16
Gas Blocks: Chemetron Oxygen Single, Front Connect	LS1105004	16
Gas Blocks: Chemetron Oxygen Single, Side Connect	LS1105014	16
Gas Blocks: Chemetron Vacuum Double, Front Connect	LS1215004	16
Gas Blocks: Chemetron Vacuum Single, Front Connect	LS1115004	16
Gas Blocks: DISS Medical Air Double, Front Connect	LS1225002	16
Gas Blocks: DISS Medical Air Double, Side Connect	LS1225012	16
Gas Blocks: DISS Medical Air Single, Front Connect	LS1125002	16
Gas Blocks: DISS Medical Air Single, Side Connect	LS1125012	16
Gas Blocks: DISS Oxygen Double, Front Connect	LS1205002	16
Gas Blocks: DISS Oxygen Double, Side Connect	LS1205012	16
Gas Blocks: DISS Oxygen Single, Front Connect	LS1105002	16
Gas Blocks: DISS Oxygen Single, Side Connect	LS1105012	16
Gas Blocks: DISS Vacuum Double, Front Connect	LS1215002	16
Gas Blocks: DISS Vacuum Single, Front Connect	LS1115002	16
Gas Blocks: Ohmeda Medical Air Double, Front Connect	LS1225003	16
Gas Blocks: Ohmeda Medical Air Double, Side Connect	LS1225013	16
Gas Blocks: Ohmeda Medical Air Single, Front Connect	LS1125003	16
Gas Blocks: Ohmeda Medical Air Single, Side Connect	LS1125013	16
Gas Blocks: Ohmeda Oxygen Double, Front Connect	LS1205003	16
Gas Blocks: Ohmeda Oxygen Double, Side Connect	LS1205013	16
Gas Blocks: Ohmeda Oxygen Single, Front Connect	LS1105003	16
Gas Blocks: Ohmeda Oxygen Single, Side Connect	LS1105013	16
Gas Blocks: Ohmeda Vacuum Double, Front Connect	LS1215003	16
Gas Blocks: Ohmeda Vacuum Single, Front Connect	LS1115003	16
Gas Blocks: Puritan Medical Air Double, Front Connect	LS1225005	17

Description	Item	Page No.
Gas Blocks: Puritan Medical Air Double, Side Connect	LS1225015	17
Gas Blocks: Puritan Medical Air Single, Front Connect	LS1125005	17
Gas Blocks: Puritan Medical Air Single, Side Connect	LS1125015	17
Gas Blocks: Puritan Oxygen Double, Front Connect	LS1205005	17
Gas Blocks: Puritan Oxygen Double, Side Connect	LS1205015	17
Gas Blocks: Puritan Oxygen Single, Front Connect	LS1105005	17
Gas Blocks: Puritan Oxygen Single, Side Connect	LS1105015	17
Gas Blocks: Puritan Vacuum Double, Front Connect	LS1215005	17
Gas Blocks: Puritan Vacuum Single, Front Connect	LS1115005	17
Gas Hoses: DISS - Chemetron 24" L, Medical Air	LS1007011	14
Gas Hoses: DISS - Chemetron 24" L, Oxygen	LS1007005	14
Gas Hoses: DISS - Chemetron 24" L, Vacuum	LS1007008	14
Gas Hoses: DISS - Chemetron 36" L, Medical Air	LS1007111	14
Gas Hoses: DISS - Chemetron 36" L, Oxygen	LS1007105	14
Gas Hoses: DISS - Chemetron 36" L, Vacuum	LS1007108	14
Gas Hoses: DISS - Chemetron 48" L, Medical Air, 90° Connector	LS1007211	14
Gas Hoses: DISS - Chemetron 48" L, Oxygen, 90° Connector	LS1007205	14
Gas Hoses: DISS - Chemetron 48" L, Vacuum, 90° Connector	LS1007208	14
Gas Hoses: DISS - DISS 24" L, Medical Air	LS1007003	14
Gas Hoses: DISS - DISS 24" L, Oxygen	LS1007001	14
Gas Hoses: DISS - DISS 24" L, Vacuum	LS1007002	14
Gas Hoses: DISS - DISS 36" L, Medical Air	LS1007103	14
Gas Hoses: DISS - DISS 36" L, Oxygen	LS1007101	14
Gas Hoses: DISS - DISS 36" L, Vacuum	LS1007102	14
Gas Hoses: DISS - DISS 48" L, Medical Air	LS1007203	14
Gas Hoses: DISS - DISS 48" L, Medical Air, 90° Connector	LS1007220	14
Gas Hoses: DISS - DISS 48" L, Oxygen, 90° Connector	LS1007218	14
Gas Hoses: DISS - DISS 48" L, Vacuum	LS1007202	14
Gas Hoses: DISS - DISS 48" L, Vacuum, 90° Connector	LS1007219	14
Gas Hoses: DISS - DISS Handnut 24" L, Medical Air, 90° Connector	LS1007303	14
Gas Hoses: DISS - DISS Handnut 24" L, Oxygen, 90° Connector	LS1007301	14
Gas Hoses: DISS - DISS Handnut 24" L, Vacuum, 90° Connector	LS1007302	14
Gas Hoses: DISS - DISS Handnut 36" L, Medical Air, 90° Connector	LS1007313	14
Gas Hoses: DISS - DISS Handnut 36" L, Oxygen, 90° Connector	LS1007311	14
Gas Hoses: DISS - DISS Handnut 36" L, Vacuum, 90° Connector	LS1007312	14
Gas Hoses: DISS - DISS Handnut 48" L, Medical Air, 90° Connector	LS1007323	14
Gas Hoses: DISS - DISS Handnut 48" L, Oxygen, 90° Connector	LS1007321	14
Gas Hoses: DISS - DISS Handnut 48" L, Vacuum, 90° Connector	LS1007322	14
Gas Hoses: DISS - Ohmeda 24" L, Oxygen	LS1007004	15
Gas Hoses: DISS - Ohmeda 24" L, Vacuum	LS1007007	15
Gas Hoses: DISS - Ohmeda 36" L, Oxygen	LS1007104	15
Gas Hoses: DISS - Ohmeda 36" L, Vacuum	LS1007107	15
Gas Hoses: DISS - Ohmeda 48" L, Medical Air, 90° Connector	LS1007210	15
Gas Hoses: DISS - Ohmeda 48" L, Oxygen, 90° Connector	LS1007204	15
Gas Hoses: DISS - Ohmeda 48" L, Vacuum, 90° Connector	LS1007207	15
Gas Hoses: DISS - Puritan 24" L, Medical Air	LS1007012	15
Gas Hoses: DISS - Puritan 24" L, Oxygen	LS1007006	15
Gas Hoses: DISS - Puritan 24" L, Vacuum	LS1007009	15
Gas Hoses: DISS - Puritan 36" L, Medical Air	LS1007112	15
Gas Hoses: DISS - Puritan 36" L, Oxygen	LS1007106	15
Gas Hoses: DISS - Puritan 36" L, Vacuum	LS1007109	15
Gas Hoses: DISS - Puritan 48" L, Medical Air, 90° Connector	LS1007212	15
Gas Hoses: DISS - Puritan 48" L, Oxygen, 90° Connector	LS1007206	15
Gas Hoses: DISS - Puritan 48" L, Vacuum, 90° Connector	LS1007209	15
Gas Splitter Blocks: 1 Chemetron - 2 DISS Front Medical Air	LS1006008	17
Gas Splitter Blocks: 1 Chemetron - 2 DISS Front Oxygen	LS1006009	17
Gas Splitter Blocks: 1 Chemetron - 2 DISS Front Vacuum	LS500063	17
Gas Splitter Blocks: 1 DISS - 2 DISS Front Medical Air	LS1006016	17

Description	Item	Page No.
Gas Splitter Blocks: 1 DISS - 2 DISS Front Oxygen	LS1006017	17
Gas Splitter Blocks: 1 DISS - 2 DISS Front Vacuum	LS1006018	17
Gas Splitter Blocks: 1 Ohmeda - 2 DISS Front Medical Air	LS1006005	17
Gas Splitter Blocks: 1 Ohmeda - 2 DISS Front Oxygen	LS1006007	17
Gas Splitter Blocks: 1 Ohmeda - 2 DISS Front Vacuum	LS500066	17
Glove Box Holder for 1 Glove Box	LS1013002	25
Glove Box Holder for up to 2 Glove Boxes	LS1013003	25
Glove Box Holder for up to 3 Glove Boxes, Adjustable Width and Height	LS1013034	25
Harmony® ConnectPoint™ System for HD LED, LED and vLED Systems for HD LED or LED Systems	LB0016	35
Harmony® ConnectPoint™ System for HD LED, LED and vLED Systems with 2000 Adapter for vLED Single Monitor Arm System	LB0017	35
Harmony® ConnectPoint™ System for HD LED, LED and vLED Systems with 3000 Adapter for vLED Dual Side-by-Side Monitor Arm System	LB0018	35
Harmony® HD LED or LED Ambient Light Kit	LB18	35
Harmony® In-light Camera Options Camera Case for HD and SD Camera	LHD0013	35
Harmony® In-light Camera Options Harmony Light Handle Camera Module, NTSC Format	LB001	35
Harmony® In-light Camera Options HD Camera Light Handle Module	LHD0002	35
Harmony® LA 300 Ceiling Mount Package	LA30	31
Harmony® LA 300 Mobile Stand Package	LA32	32
Harmony® LA 300 Replacement Lamp	LA21	32
Harmony® LA 300 Wall Mount Package	LA31	31
Harmony® LED 385 Ceiling Mount Package	LED30	31
Harmony® LED 385 Mobile Stand Package	LED31	31
Harmony® LED 385 Sterilizable Handle - Replacement	LB57	34
Heavy Duty Equipment Rail 1' W, 2 Wall Mounting Holes	LS1002012	5
Heavy Duty Equipment Rail 10' W, 8 Wall Mounting Holes	LS1002120	5
Heavy Duty Equipment Rail 2' W, 2 Wall Mounting Holes	LS1002024	5
Heavy Duty Equipment Rail 3' W, 3 Wall Mounting Holes	LS1002036	5
Heavy Duty Equipment Rail 4' W, 3 Wall Mounting Holes	LS1002048	5
Heavy Duty Equipment Rail 5' W, 4 Wall Mounting Holes	LS1002060	5
Heavy Duty Equipment Rail 6' W, 5 Wall Mounting Holes	LS1002072	5
Heavy Duty Equipment Rail 7' W, 6 Wall Mounting Holes	LS1002084	5
Heavy Duty Equipment Rail 8' W, 6 Wall Mounting Holes	LS1002096	5
Heavy Duty Equipment Rail 9' W, 7 Wall Mounting Holes	LS1002108	5
Hinged Shelves 13.5" W x 10" D	LS1009008	4
Hinged Shelves 17" W x 12" D	LS1009009	4
Hinged Shelves 9" W x 12" D	LS1009007	4
Hose and Cable Clip Organizer includes 3 Clips with Snap Action Adapter	LS1013033	27
Hose and Cable Clip Organizer includes 3 Clips without Snap Action Adapter	LS1013007	27
Hose and Cable Clip Organizer includes 6 Clips with Snap Action Adapter	LS1013029	27
Hose and Cable Clip Organizer includes 6 Clips without Snap Action Adapter	LS1013008	27
IV Extension Arm for Harmony Nexus™ equipment boom		12, 12, 12, 12
IV Extension Arm 12" L, Fits Ø38mm IV Pole w/Ø38mm Pole Mount	LS1014010	12
IV Extension Arm 20" L, Fits Ø38mm IV Pole w/Vertical Column Channel Mount	LS1014015	12
IV Extension Arm 32" L, Fits Ø25mm IV Pole w/Front Column Mount	LS1018075	12
IV Extension Arm 32" L, Fits Ø25mm IV Pole w/Ø38mm Pole Mount	LS1014008	12
IV Extension Arm Adapter to Add 2nd IV Pole to Existing IV Pole	LS1018066	12
IV Extension Arm Fixed Mount IV Pole Extension Arm	LS1018061	12
IV Pole Mounting Posts and Holders 3" H, Mounts to Harmony EMS Vertical Channel	LS1018074	12
IV Pole Mounting Posts and Holders 4" H, Mounts to Equipment Rail	LS1013024	12
IV Pole Mounting Posts and Holders Block for Mounting IV Pole to Equipment Rail	LS1018062	12
IV Pole Mounting Posts and Holders Universal IV Pole Holder for Ø25mm - Ø38mm poles	LS1013022	12
IV Poles, 36" L with Extensions, Swivel Mount Double IV Pole with 12" L Swivel Arm	LS1014002	12
IV Poles, 36" L with Extensions, Swivel Mount Single IV Pole with 10" L Swivel Arm	LS1014001	12

Description	Item	Page No.
IV Poles, Single with Extensions, Double Rail Mount 36" L IV Pole	LS1014003	11
IV Poles, Single with Extensions, Double Rail Mount 48" L IV Pole	LS1014004	11
IV Poles, Single with Extensions, Single Rail Mount 16" L IV Pole with 10" L Extension	LS1014005	11
IV Poles, Single with Extensions, Single Rail Mount 24" L IV Pole with 15" L Extension	LS1014006	11
IV Poles, Single with Extensions, Single Rail Mount 30" L IV Pole with 20" L Extension	LS1014007	11
IV Pump Rail Mount Pole	LS1014P11	12
Keyboard and Mouse Support	THKEY131	29
Keyboard and Mouse Support	THKEY111	29
Keyboard and Mouse Support	THKEY311	29
Keyboard and Mouse Support	THKEY411	29
Keyboard Drawer with Mousepad	THKEY121	29
Keyboard Holder	THKEY112	28
Laptop Holder with Mousepad	THKEY113	29
Mayo Trays 13.625" W x 9.75" D Hinged	LS1009010	4
Mayo Trays 13.625" W x 9.75" D Removable	LS1009012	4
Mayo Trays 17.125" W x 11.625" D Hinged	LS1009011	4
Mayo Trays 17.125" W x 11.625" D Removable	LS1009013	4
Monitor Adaptor for Nihon Kohen	THOPT005	23
Monitor Holder - Double Articulation	THMON3111	19
Monitor Holder - Double Articulation	THMON4111	19
Monitor Holder - Double Articulation	THMON3323	20
Monitor Holder - Double Articulation	THMON3311	21
Monitor Holder - Double Articulation	THMON3313	21
Monitor Holder - Double Articulation	THMON3211	21
Monitor Holder - Double Articulation	THMON3212	21
Monitor Holder - Double Articulation	THMON3123	22
Monitor Holder - Double Articulation	THMON3133	23
Monitor Holder - Double Articulation	THMON3333	23
Monitor Holder - Double Articulation with Keyboard Holder	THMON3163	20
Monitor Holder - Single Articulation	THMON1111	19
Monitor Holder - Single Articulation	THMON2111	19
Monitor Holder - Single Articulation	THMON1113	19
Monitor Holder - Single Articulation	THMON1115	20
Monitor Holder - Single Articulation	THMON2123	22
Monitor Holder - Single Articulation	THMON2133	22
Monitor Holder - Triple Articulation	THMON4163	20
Monitor Holder - Triple Articulation	THMON4211	21
Monitor Holder - Triple Articulation	THMON4212	22
Monitor Holder - Triple Articulation	THMON4123	22
Monitor Holder - Triple Articulation	THMON4133	23
Monitor Holder - Triple Articulation	THMON2218	23
Mounting Bracket for Bird Blender	LS1013023	18
Ophthalmoscope Holder, Welch Allyn 767 Series	LS1013011	25
Philips Monitor Support Arm Philips Patient Monitor Arm, Adj, 15.8in. Arm Length, 31 Lbs. max load	THMON3344	23
Philips Monitor Support Arm Philips Patient Monitor Arm, Adj, 5.0in. Arm Length, 31 Lbs. max load	THMON2144	23
Pole for Bair Hugger	LS1022010	30
Pump Support	THPUM6128	13
Rail Mounting Hardware - Flush Mounting for Drywall	LS1004P02	6
Rail Mounting Hardware - Flush Mounting for Masonry	LS1004P03	6
Rail Mounting Hardware - Flush Mounting for Metal Studs	LS1004P01	6
Rail Mounting Hardware - Standoff Mounting for Drywall	LS1004P05	6
Rail Mounting Hardware - Standoff Mounting for Masonry	LS1004P06	6
Rail Mounting Hardware - Standoff Mounting for Metal Studs	LS1004P04	6
Replacement Side Rail Kits 14" for Standard 17" Shelf (Image Shown)	LS1022008	6
Replacement Side Rail Kits 17" for Large 20" Shelf	LS1022009	6
Re-sterilizable Aluminum In-light Handle with Surgeon Control	LB23	33

Description	Item	Page No.
Re-sterilizable Aluminum In-light Handle without Surgeon Control	LB22	33
Re-sterilizable Plastic In-light Handle	LB20	33
Silicone Insert Ring for #LB23 Re-sterilizable In-light Handle with Surgeon Control	LB24	33
Smoke Evacuation Filter Filter Two (2) Pack	QS0022	8
Smoke Evacuation Fluid Filter Trap Filter Fluid Trap - 10 Per Box	QS0027	8
Smoke Evacuation System Laparoscopic Tubing Laparoscopic Tubes - 12 Per Box	QS0026	8
Smoke Evacuation System Large Shelf HarmonyAIR Smoke Evacuation System - 110V (shelf not included)	QS0020	8
Smoke Evacuation System Remote Switch Activator Remote Switch Activator	QS0028	9
Smoke Evacuation System Small Shelf HarmonyAIR Smoke Evacuation System - 110V (shelf not included)	QS0018	8
Smoke Evacuation System Sterile Tubing Tubing 7/8" (22mm) x 10 feet (3.1m) - 24 Per Box	QS0024	8
Smoke Evacuation System Sterile Tubing Tubing 7/8" (22mm) x 14 feet (4.3m) - 5 Per Box	QS0025	8
Smoke Evacuation System Sterile Tubing Tubing 7/8" (22mm) x 6 feet (1.8m) - 24 Per Box	QS0023	8
Snap Action Mounting Adapter with Horizontal Holes	LS1001002	26
Snap Action Mounting Adapter with Vertical Holes	LS1001001	26
Speculum Container Holder	LS1013012	25
Stainless Steel Storage Basket	THOPT9893	28
Storage Basket	THOPT0291	28
Surround Rail 14" Rear Surround Rail (Image Shown)	LS1022001	5
Surround Rail 24" Rear Surround Rail	LS1022002	5
TAD™ IV Transfer System - Bed Adaptors TAD™ Bed Adaptor for Hill Rom Total Care with Cone	LS1035222	10
TAD™ IV Transfer System - Bed Adaptors TAD™ Bed Adaptor for Stryker Epci II Zoom Bed w/Cone (Right)	LS1035220R	10
TAD™ IV Transfer System - Bed Adaptors TAD™ Bed Adaptor for Stryker Epic II Zoom Bed w/Cone (Left)	LS1035220L	10
TAD™ IV Transfer System - Bed Adaptors TAD™ Bed Adaptor for Stryker In Touch Bed with Cone	LS1035221	10
TAD™ IV Transfer System - Boom Adaptors TAD™ Boom Adaptors for Draeger Vertical Channel w/Arm and Cone	LS1035208	10
TAD™ IV Transfer System - Boom Adaptors TAD™ Boom Adaptors for STERIS HarmonyAIR™ equipment boom	LS1035209	10
TAD™ IV Transfer System - Boom Adaptors TAD™ Mobile Docking Station	LS1035205	10
TAD™ IV Transfer System - Boom Adaptors TAD™ Mount for 388mm Pole with Arm and Cone	LS1035207	10
TAD™ IV Transfer System - Boom Adaptors w/Arm and Cone		10
TAD™ IV Transfer System - IV Poles TAD™ Single IV Pole 27" Long, 4 Hook	LS1035201	11
TAD™ IV Transfer System - IV Poles TAD™ Triple IV Pole, 27" Long, 8 Hangers	LS1035202	11
TAD™ IV Transfer System TAD™ Mobile Docking Station	LS1035205	10
Task Light Support Burton Lamp Mounting Holder	LS1015002	27
Task Light Support Luxo Lamp Mounting Holder	LS1015001	27
Task Light Support Waldmann Lamp Mounting Holder	LS1015003	27
Telephone Mounting Plate attaches to Horizontal Equipment Rail	LS1013027	27
Telephone Mounting Plate attaches to Vertical Channel	LS1018073	27
Thermometer Holder	LS1013045	25
Transducer Holder	LS1013025	25
Universal Manometer Holder	LS1013016	26
Universal Resuscitator Holder	LS1013004	26
Universal Sharps Container Holder	LS1013009	26
Universal Waste Basket Holder	LS1013021	26
Utility Basket 10" W x 6" D x 4" H	LS1011002	28
Utility Basket 10"W x 13" H Chart Holder	LS1013001	28
Utility Basket 18"W x 9"D x 4" H with 3 Adjustable Dividers	LS1011003	28
Utility Basket 6.5" W x 4" D x 7" H	LS1011001	28

Description	Item	Page No.
Utility Hook Single Hook	LS1013013	28
Utility Hook Single Hook with 3 Clips	LS1013113	28
Utility Hook Triple Hooks	LS1013014	28
Utility Hook Triple Hooks with 9 Clips	LS1013114	28
Vacuum Bottle Slide Holder	LS1008001	26
Ventilator Manifold with Blender 2 Air, 2 Oxygen	LS1006001	18
Ventilator Manifold with Blender 3 Air, 3 Oxygen	LS1006002	18
VESA 100 Adaptor	THOPT004	20
Waldmann Task Light 50sx Waldmann Halux LED 20 Lamp	LS1015025	27
Waldmann Task Light 50sx Waldmann Task Light 50sx	LS1015004	27
Workstation Shelves 10" W x 15" D Mounts to Extension Rail	LS1009100	4
Workstation Shelves 8" W x 12" D Mounts to 38mm Pole	LS1009103	4

Item	Description	Page No.
AS3122	Amsco® Examiner® 10 Examination Lights Wall-mounted with 14" Extension Arm	32
AS3124	Amsco® Examiner® 10 Examination Lights Ceiling-mounted without 14" Extension Arm, Single Lighthead	32
AS3133	Amsco® Examiner® 10 Examination Lights Ceiling-mounted with 14" Extension Arm, Single Lighthead	32
AS3135	Amsco® Examiner® 10 Examination Lights Mobile Unit, 34" W Base, 67" H Stand	32
AS3533	Amsco® Examiner® 10 Examination Lights Ceiling-mounted with 14" Extension Arm, Dual Lighthead	32
AS70060000060030	Amsco® LD-202 In-Ceiling Lighting System Dual Lighthead	32
AS71060000060030	Amsco® LD-202 In-Ceiling Lighting System Single Lighthead	32
LA21	Harmony® LA 300 Replacement Lamp	32
LA30	Harmony® LA 300 Ceiling Mount Package	31
LA31	Harmony® LA 300 Wall Mount Package	31
LA32	Harmony® LA 300 Mobile Stand Package	32
LB001	Harmony® In-light Camera Options Harmony Light Handle Camera Module, NTSC Format	35
LB0016	Harmony® ConnectPoint™ System for HD LED, LED and vLED Systems for HD LED or LED Systems	35
LB0017	Harmony® ConnectPoint™ System for HD LED, LED and vLED Systems with 2000 Adapter for vLED Single Monitor Arm System	35
LB0018	Harmony® ConnectPoint™ System for HD LED, LED and vLED Systems with 3000 Adapter for vLED Dual Side-by-Side Monitor Arm System	35
LB18	Harmony® HD LED or LED Ambient Light Kit	35
LB20	Re-sterilizable Plastic In-light Handle	33
LB22	Re-sterilizable Aluminum In-light Handle without Surgeon Control	33
LB23	Re-sterilizable Aluminum In-light Handle with Surgeon Control	33
LB24	Silicone Insert Ring for #LB23 Re-sterilizable In-light Handle with Surgeon Control	33
LB53	Disposable Sterile Light Handle Cover	33
LB54	Disposable Sterile Light Handle Camera Cover	34
LB57	Harmony® LED 385 Sterilizable Handle - Replacement	34
LED30	Harmony® LED 385 Ceiling Mount Package	31
LED31	Harmony® LED 385 Mobile Stand Package	31
LHD0002	Harmony® In-light Camera Options HD Camera Light Handle Module	35
LHD0013	Harmony® In-light Camera Options Camera Case for HD and SD Camera	35
LS1001001	Snap Action Mounting Adapter with Vertical Holes	26
LS1001002	Snap Action Mounting Adapter with Horizontal Holes	26
LS1001011	Double Snap Action Adapter with 4 Holes	27
LS1001012	Double Snap Action Adapter with 2 Holes	27
LS1002012	Heavy Duty Equipment Rail 1' W, 2 Wall Mounting Holes	5
LS1002024	Heavy Duty Equipment Rail 2' W, 2 Wall Mounting Holes	5
LS1002036	Heavy Duty Equipment Rail 3' W, 3 Wall Mounting Holes	5
LS1002048	Heavy Duty Equipment Rail 4' W, 3 Wall Mounting Holes	5
LS1002060	Heavy Duty Equipment Rail 5' W, 4 Wall Mounting Holes	5
LS1002072	Heavy Duty Equipment Rail 6' W, 5 Wall Mounting Holes	5
LS1002084	Heavy Duty Equipment Rail 7' W, 6 Wall Mounting Holes	5
LS1002096	Heavy Duty Equipment Rail 8' W, 6 Wall Mounting Holes	5
LS1002108	Heavy Duty Equipment Rail 9' W, 7 Wall Mounting Holes	5
LS1002120	Heavy Duty Equipment Rail 10' W, 8 Wall Mounting Holes	5
LS1002P01	Equipment Rail End Caps Heavy Duty (Qty 2)	6
LS1003P01	Equipment Rail End Caps Standard (Qty 2)	6
LS1004P01	Rail Mounting Hardware - Flush Mounting for Metal Studs	6
LS1004P02	Rail Mounting Hardware - Flush Mounting for Drywall	6
LS1004P03	Rail Mounting Hardware - Flush Mounting for Masonry	6
LS1004P04	Rail Mounting Hardware - Standoff Mounting for Metal Studs	6
LS1004P05	Rail Mounting Hardware - Standoff Mounting for Drywall	6
LS1004P06	Rail Mounting Hardware - Standoff Mounting for Masonry	6

Item	Description	Page No.
LS1006001	Ventilator Manifold with Blender 2 Air, 2 Oxygen	18
LS1006002	Ventilator Manifold with Blender 3 Air, 3 Oxygen	18
LS1006005	Gas Splitter Blocks: 1 Ohmeda - 2 DISS Front Medical Air	17
LS1006007	Gas Splitter Blocks: 1 Ohmeda - 2 DISS Front Oxygen	17
LS1006008	Gas Splitter Blocks: 1 Chemetron - 2 DISS Front Medical Air	17
LS1006009	Gas Splitter Blocks: 1 Chemetron - 2 DISS Front Oxygen	17
LS1006016	Gas Splitter Blocks: 1 DISS - 2 DISS Front Medical Air	17
LS1006017	Gas Splitter Blocks: 1 DISS - 2 DISS Front Oxygen	17
LS1006018	Gas Splitter Blocks: 1 DISS - 2 DISS Front Vacuum	17
LS1007001	Gas Hoses: DISS - DISS 24" L, Oxygen	14
LS1007002	Gas Hoses: DISS - DISS 24" L, Vacuum	14
LS1007003	Gas Hoses: DISS - DISS 24" L, Medical Air	14
LS1007004	Gas Hoses: DISS - Ohmeda 24" L, Oxygen	15
LS1007005	Gas Hoses: DISS - Chemetron 24" L, Oxygen	14
LS1007006	Gas Hoses: DISS - Puritan 24" L, Oxygen	15
LS1007007	Gas Hoses: DISS - Ohmeda 24" L, Vacuum	15
LS1007008	Gas Hoses: DISS - Chemetron 24" L, Vacuum	14
LS1007009	Gas Hoses: DISS - Puritan 24" L, Vacuum	15
LS1007011	Gas Hoses: DISS - Chemetron 24" L, Medical Air	14
LS1007012	Gas Hoses: DISS - Puritan 24" L, Medical Air	15
LS1007101	Gas Hoses: DISS - DISS 36" L, Oxygen	14
LS1007102	Gas Hoses: DISS - DISS 36" L, Vacuum	14
LS1007103	Gas Hoses: DISS - DISS 36" L, Medical Air	14
LS1007104	Gas Hoses: DISS - Ohmeda 36" L, Oxygen	15
LS1007105	Gas Hoses: DISS - Chemetron 36" L, Oxygen	14
LS1007106	Gas Hoses: DISS - Puritan 36" L, Oxygen	15
LS1007107	Gas Hoses: DISS - Ohmeda 36" L, Vacuum	15
LS1007108	Gas Hoses: DISS - Chemetron 36" L, Vacuum	14
LS1007109	Gas Hoses: DISS - Puritan 36" L, Vacuum	15
LS1007111	Gas Hoses: DISS - Chemetron 36" L, Medical Air	14
LS1007112	Gas Hoses: DISS - Puritan 36" L, Medical Air	15
LS1007202	Gas Hoses: DISS - DISS 48" L, Vacuum	14
LS1007203	Gas Hoses: DISS - DISS 48" L, Medical Air	14
LS1007204	Gas Hoses: DISS - Ohmeda 48" L, Oxygen, 90° Connector	15
LS1007205	Gas Hoses: DISS - Chemetron 48" L, Oxygen, 90° Connector	14
LS1007206	Gas Hoses: DISS - Puritan 48" L, Oxygen, 90° Connector	15
LS1007207	Gas Hoses: DISS - Ohmeda 48" L, Vacuum, 90° Connector	15
LS1007208	Gas Hoses: DISS - Chemetron 48" L, Vacuum, 90° Connector	14
LS1007209	Gas Hoses: DISS - Puritan 48" L, Vacuum, 90° Connector	15
LS1007210	Gas Hoses: DISS - Ohmeda 48" L, Medical Air, 90° Connector	15
LS1007211	Gas Hoses: DISS - Chemetron 48" L, Medical Air, 90° Connector	14
LS1007212	Gas Hoses: DISS - Puritan 48" L, Medical Air, 90° Connector	15
LS1007218	Gas Hoses: DISS - DISS 48" L, Oxygen, 90° Connector	14
LS1007219	Gas Hoses: DISS - DISS 48" L, Vacuum, 90° Connector	14
LS1007220	Gas Hoses: DISS - DISS 48" L, Medical Air, 90° Connector	14
LS1007301	Gas Hoses: DISS - DISS Handnut 24" L, Oxygen, 90° Connector	14
LS1007302	Gas Hoses: DISS - DISS Handnut 24" L, Vacuum, 90° Connector	14
LS1007303	Gas Hoses: DISS - DISS Handnut 24" L, Medical Air, 90° Connector	14
LS1007311	Gas Hoses: DISS - DISS Handnut 36" L, Oxygen, 90° Connector	14
LS1007312	Gas Hoses: DISS - DISS Handnut 36" L, Vacuum, 90° Connector	14
LS1007313	Gas Hoses: DISS - DISS Handnut 36" L, Medical Air, 90° Connector	14
LS1007321	Gas Hoses: DISS - DISS Handnut 48" L, Oxygen, 90° Connector	14
LS1007322	Gas Hoses: DISS - DISS Handnut 48" L, Vacuum, 90° Connector	14
LS1007323	Gas Hoses: DISS - DISS Handnut 48" L, Medical Air, 90° Connector	14
LS1008001	Vacuum Bottle Slide Holder	26
LS1009001	Flat Shelves 10" W x 8" D	4
LS1009002	Flat Shelves 10" W x 13" D	4
LS1009003	Flat Shelves 13" W x 13" D	4

Item	Description	Page No.
LS1009004	Flat Shelves 19" W x 13" D	4
LS1009005	Angled Shelves 8" W x 8" D without Velcro	4
LS1009006	Angled Shelves 13" W x 8" D without Velcro	4
LS1009007	Hinged Shelves 9" W x 12" D	4
LS1009008	Hinged Shelves 13.5" W x 10" D	4
LS1009009	Hinged Shelves 17" W x 12" D	4
LS1009010	Mayo Trays 13.625" W x 9.75" D Hinged	4
LS1009011	Mayo Trays 17.125" W x 11.625" D Hinged	4
LS1009012	Mayo Trays 13.625" W x 9.75" D Removable	4
LS1009013	Mayo Trays 17.125" W x 11.625" D Removable	4
LS1009014	Angled Shelves 8" W x 8" D with Velcro	4
LS1009015	Angled Shelves 13" W x 8" D with Velcro	4
LS1009100	Workstation Shelves 10" W x 15" D Mounts to Extension Rail	4
LS1009103	Workstation Shelves 8" W x 12" D Mounts to 38mm Pole	4
LS1011001	Utility Basket 6.5" W x 4" D x 7" H	28
LS1011002	Utility Basket 10" W x 6" D x 4" H	28
LS1011003	Utility Basket 18"W x 9"D x 4" H with 3 Adjustable Dividers	28
LS1012002	Blood Pressure Cuff Holder BP Cuff Holder	24
LS1012P03	Blood Pressure Cuff Holder U-Shaped BP Cuff Holder	24
LS1012P04	Blood Pressure Cuff Holder BP Cuff Basket	24
LS1013001	Utility Basket 10"W x 13" H Chart Holder	28
LS1013002	Glove Box Holder for 1 Glove Box	25
LS1013003	Glove Box Holder for up to 2 Glove Boxes	25
LS1013004	Universal Resuscitator Holder	26
LS1013005	Catheter Holders Small Holder 7" W x 5" D x 7" H	24
LS1013006	Catheter Holders Long Holder 6" W x 4" D x 18" H	24
LS1013007	Hose and Cable Clip Organizer includes 3 Clips without Snap Action Adapter	27
LS1013008	Hose and Cable Clip Organizer includes 6 Clips without Snap Action Adapter	27
LS1013009	Universal Sharps Container Holder	26
LS1013011	Ophthalmoscope Holder, Welch Allyn 767 Series	25
LS1013012	Speculum Container Holder	25
LS1013013	Utility Hook Single Hook	28
LS1013014	Utility Hook Triple Hooks	28
LS1013015	E-Cylinder Tank Holder	18
LS1013016	Universal Manometer Holder	26
LS1013019	38mm Pole Mounted Rail	5
LS1013021	Universal Waste Basket Holder	26
LS1013022	IV Pole Mounting Posts and Holders Universal IV Pole Holder for Ø25mm - Ø38mm poles	12
LS1013023	Mounting Bracket for Bird Blender	18
LS1013024	IV Pole Mounting Posts and Holders 4" H, Mounts to Equipment Rail	12
LS1013025	Transducer Holder	25
LS1013026	Cable Management Cord Wrap Mount	29
LS1013027	Telephone Mounting Plate attaches to Horizontal Equipment Rail	27
LS1013028	Flex Arm Respiratory Circuit Holder	24
LS1013029	Hose and Cable Clip Organizer includes 6 Clips with Snap Action Adapter	27
LS1013033	Hose and Cable Clip Organizer includes 3 Clips with Snap Action Adapter	27
LS1013034	Glove Box Holder for up to 3 Glove Boxes, Adjustable Width and Height	25
LS1013035	Argon Tank Holder	18
LS1013045	Thermometer Holder	25
LS1013113	Utility Hook Single Hook with 3 Clips	28
LS1013114	Utility Hook Triple Hooks with 9 Clips	28
LS1014001	IV Poles, 36" L with Extensions, Swivel Mount Single IV Pole with 10" L Swivel Arm	12
LS1014002	IV Poles, 36" L with Extensions, Swivel Mount Double IV Pole with 12" L Swivel Arm	12
LS1014003	IV Poles, Single with Extensions, Double Rail Mount 36" L IV Pole	11
LS1014004	IV Poles, Single with Extensions, Double Rail Mount 48" L IV Pole	11
LS1014005	IV Poles, Single with Extensions, Single Rail Mount 16" L IV Pole with 10" L Extension	11
LS1014006	IV Poles, Single with Extensions, Single Rail Mount 24" L IV Pole with 15" L Extension	11

Item	Description	Page No.
LS1014007	IV Poles, Single with Extensions, Single Rail Mount 30" L IV Pole with 20" L Extension	11
LS1014008	IV Extension Arm 32" L, Fits Ø25mm IV Pole w/Ø38mm Pole Mount	12
LS1014010	IV Extension Arm 12" L, Fits Ø38mm IV Pole w/Ø38mm Pole Mount	12
LS1014015	IV Extension Arm 20" L, Fits Ø38mm IV Pole w/Vertical Column Channel Mount	12
LS1014P11	IV Pump Rail Mount Pole	12
LS1015001	Task Light Support Luxo Lamp Mounting Holder	27
LS1015002	Task Light Support Burton Lamp Mounting Holder	27
LS1015003	Task Light Support Waldmann Lamp Mounting Holder	27
LS1015004	Waldmann Task Light 50sx Waldmann Task Light 50sx	27
LS1015025	Waldmann Task Light 50sx Waldmann Halux LED 20 Lamp	27
LS1018004	Compact Rail 38mm IV Pole Mount	5
LS1018005	Compact Rail 25mm IV Pole Mount	5
LS1018061	IV Extension Arm Fixed Mount IV Pole Extension Arm	12
LS1018062	IV Pole Mounting Posts and Holders Block for Mounting IV Pole to Equipment Rail	12
LS1018066	IV Extension Arm Adapter to Add 2nd IV Pole to Existing IV Pole	12
LS1018068	Cable Management Extension Arm	12
LS1018073	Telephone Mounting Plate attaches to Vertical Channel	27
LS1018074	IV Pole Mounting Posts and Holders 3" H, Mounts to Harmony EMS Vertical Channel	12
LS1018075	IV Extension Arm 32" L, Fits Ø25mm IV Pole w/Front Column Mount	12
LS1018121	Foot Pedal Holder Rear Facing 15" W x 18" D x 7" H	25
LS1018121B	Foot Pedal Holder Rear Facing 20" W x 20" D x 8.5" H	25
LS1018129	Foot Pedal Holder Forward Facing 18" W x 18" D x 7" H	25
LS1018S01	Antiseptic Handrub and Disinfectant Wipes Mounted Holders for Coverage® and Coverage Plus® Germicidal Surface Wipes	24
LS1018S02	Antiseptic Handrub and Disinfectant Wipes Mounted Holders for 17 oz Alcare Plus® Antiseptic Handrub	24
LS1018S03	Antiseptic Handrub and Disinfectant Wipes Mounted Holders for 9 oz Alcare Plus® Antiseptic Handrub	24
LS1022001	Surround Rail 14" Rear Surround Rail (Image Shown)	5
LS1022002	Surround Rail 24" Rear Surround Rail	5
LS1022003	Cross Rail 14" Front Cross Rail	5
LS1022004	Cross Rail 18" Front Cross Rail	5
LS1022005	Cross Rail 14" Front Cross Rail with 10" Side Rails (Image Shown)	5
LS1022006	Cross Rail 18" Front Cross Rail with 10" Side Rails	5
LS1022008	Replacement Side Rail Kits 14" for Standard 17" Shelf (Image Shown)	6
LS1022009	Replacement Side Rail Kits 17" for Large 20" Shelf	6
LS1022010	Pole for Bair Hugger	30
LS1022011	Bair Hugger Shelf	30
LS1035201	TAD™ IV Transfer System - IV Poles TAD™ Single IV Pole 27" Long, 4 Hook	11
LS1035202	TAD™ IV Transfer System - IV Poles TAD™ Triple IV Pole, 27" Long, 8 Hangers	11
LS1035205	TAD™ IV Transfer System TAD™ Mobile Docking Station	10, 10
LS1035207	TAD™ IV Transfer System - Boom Adaptors TAD™ Mount for 388mm Pole with Arm and Cone	10
LS1035208	TAD™ IV Transfer System - Boom Adaptors TAD™ Boom Adaptors for Draeger Vertical Channel w/Arm and Cone	10
LS1035209	TAD™ IV Transfer System - Boom Adaptors TAD™ Boom Adaptors for STERIS HarmonyAIR™ equipment boom	10
LS1035220L	TAD™ IV Transfer System - Bed Adaptors TAD™ Bed Adaptor for Stryker Epic II Zoom Bed w/Cone (Left)	10
LS1035220R	TAD™ IV Transfer System - Bed Adaptors TAD™ Bed Adaptor for Stryker Epci II Zoom Bed w/Cone (Right)	10
LS1035221	TAD™ IV Transfer System - Bed Adaptors TAD™ Bed Adaptor for Stryker In Touch Bed with Cone	10
LS1035222	TAD™ IV Transfer System - Bed Adaptors TAD™ Bed Adaptor for Hill Rom Total Care with Cone	10
LS1105001	Gas Blocks: 1/8" NPT Oxygen Single, Front Connect	15
LS1105002	Gas Blocks: DISS Oxygen Single, Front Connect	16
LS1105003	Gas Blocks: Ohmeda Oxygen Single, Front Connect	16

Item	Description	Page No.
LS1105004	Gas Blocks: Chemetron Oxygen Single, Front Connect	16
LS1105005	Gas Blocks: Puritan Oxygen Single, Front Connect	17
LS1105011	Gas Blocks: 1/8" NPT Oxygen Single, Front Connect with Diss Side	15
LS1105012	Gas Blocks: DISS Oxygen Single, Side Connect	16
LS1105013	Gas Blocks: Ohmeda Oxygen Single, Side Connect	16
LS1105014	Gas Blocks: Chemetron Oxygen Single, Side Connect	16
LS1105015	Gas Blocks: Puritan Oxygen Single, Side Connect	17
LS1115001	Gas Blocks: 1/8" NPT Vacuum Single, Front Connect	15
LS1115002	Gas Blocks: DISS Vacuum Single, Front Connect	16
LS1115003	Gas Blocks: Ohmeda Vacuum Single, Front Connect	16
LS1115004	Gas Blocks: Chemetron Vacuum Single, Front Connect	16
LS1115005	Gas Blocks: Puritan Vacuum Single, Front Connect	17
LS1115006	Gas Blocks: 1/8" NPT Vacuum Single, Front Connect	15
LS1125002	Gas Blocks: DISS Medical Air Single, Front Connect	16
LS1125003	Gas Blocks: Ohmeda Medical Air Single, Front Connect	16
LS1125004	Gas Blocks: Chemetron Medical Air Single, Front Connect	16
LS1125005	Gas Blocks: Puritan Medical Air Single, Front Connect	17
LS1125011	Gas Blocks: 1/8" NPT Medical Air Single, Front Connect with Diss Side	15
LS1125012	Gas Blocks: DISS Medical Air Single, Side Connect	16
LS1125013	Gas Blocks: Ohmeda Medical Air Single, Side Connect	16
LS1125014	Gas Blocks: Chemetron Medical Air Single, Side Connect	16
LS1125015	Gas Blocks: Puritan Medical Air Single, Side Connect	17
LS1205001	Gas Blocks: 1/8" NPT Oxygen Double Front Connect	15
LS1205002	Gas Blocks: DISS Oxygen Double, Front Connect	16
LS1205003	Gas Blocks: Ohmeda Oxygen Double, Front Connect	16
LS1205004	Gas Blocks: Chemetron Oxygen Double, Front Connect	16
LS1205005	Gas Blocks: Puritan Oxygen Double, Front Connect	17
LS1205012	Gas Blocks: DISS Oxygen Double, Side Connect	16
LS1205013	Gas Blocks: Ohmeda Oxygen Double, Side Connect	16
LS1205014	Gas Blocks: Chemetron Oxygen Double, Side Connect	16
LS1205015	Gas Blocks: Puritan Oxygen Double, Side Connect	17
LS1205111	Gas Blocks: 1/8" NPT Oxygen Double, Front Connect with 2 Diss Side	15
LS1215002	Gas Blocks: DISS Vacuum Double, Front Connect	16
LS1215003	Gas Blocks: Ohmeda Vacuum Double, Front Connect	16
LS1215004	Gas Blocks: Chemetron Vacuum Double, Front Connect	16
LS1215005	Gas Blocks: Puritan Vacuum Double, Front Connect	17
LS1215111	Gas Blocks: 1/8" NPT Vacuum Double, Front Connect with 2 Diss Side	15
LS1225001	Gas Blocks: 1/8" NPT Medical Air Double, Front Connect	15
LS1225002	Gas Blocks: DISS Medical Air Double, Front Connect	16
LS1225003	Gas Blocks: Ohmeda Medical Air Double, Front Connect	16
LS1225004	Gas Blocks: Chemetron Medical Air Double, Front Connect	16
LS1225005	Gas Blocks: Puritan Medical Air Double, Front Connect	17
LS1225011	Gas Blocks: 1/8" NPT Medical Air Double, Front Connect with 2 Diss Side	15
LS1225012	Gas Blocks: DISS Medical Air Double, Side Connect	16
LS1225013	Gas Blocks: Ohmeda Medical Air Double, Side Connect	16
LS1225014	Gas Blocks: Chemetron Medical Air Double, Side Connect	16
LS1225015	Gas Blocks: Puritan Medical Air Double, Side Connect	17
LS2001010	Baxter Bulb Tray Holder	24
LS500063	Gas Splitter Blocks: 1 Chemetron - 2 DISS Front Vacuum	17
LS500066	Gas Splitter Blocks: 1 Ohmeda - 2 DISS Front Vacuum	17
LS500085	Adapter for Sharps Holder	24
QS0018	Smoke Evacuation System Small Shelf HarmonyAIR Smoke Evacuation System - 110V (shelf not included)	8
QS0020	Smoke Evacuation System Large Shelf HarmonyAIR Smoke Evacuation System - 110V (shelf not included)	8
QS0022	Smoke Evacuation Filter Filter Two (2) Pack	8
QS0023	Smoke Evacuation System Sterile Tubing Tubing 7/8" (22mm) x 6 feet (1.8m) - 24 Per Box	8

Item	Description	Page No.
QS0024	Smoke Evacuation System Sterile Tubing Tubing 7/8" (22mm) x 10 feet (3.1m) - 24 Per Box	8
QS0025	Smoke Evacuation System Sterile Tubing Tubing 7/8" (22mm) x 14 feet (4.3m) - 5 Per Box	8
QS0026	Smoke Evacuation System Laparoscopic Tubing Laparoscopic Tubes - 12 Per Box	8
QS0027	Smoke Evacuation Fluid Filter Trap Filter Fluid Trap - 10 Per Box	8
QS0028	Smoke Evacuation System Remote Switch Activator Remote Switch Activator	9
THCOM6144	Computer Holders Small, 11 lbs max load	28
THCOM6146	Computer Holders Large, 44 lbs max load	28
THDRAWLG	Equipment Shelves, Large - 25.6" W x 20.9" D Drawer Kit for Large Shelves (Includes 1 Drawer and Mounting Hardware)	7
THDRAWSM	Equipment Shelves, Small - 17.7" W x 16.9" D Drawer Kit for Small Shelf (Includes 1 Drawer and Mounting Hardware)	7
THKEY111	Keyboard and Mouse Support	29
THKEY112	Keyboard Holder	28
THKEY113	Laptop Holder with Mousepad	29
THKEY121	Keyboard Drawer with Mousepad	29
THKEY131	Keyboard and Mouse Support	29
THKEY311	Keyboard and Mouse Support	29
THKEY411	Keyboard and Mouse Support	29
THMON1111	Monitor Holder - Single Articulation	19
THMON1113	Monitor Holder - Single Articulation	19
THMON1115	Monitor Holder - Single Articulation	20
THMON2111	Monitor Holder - Single Articulation	19
THMON2123	Monitor Holder - Single Articulation	22
THMON2133	Monitor Holder - Single Articulation	22
THMON2144	Philips Monitor Support Arm Philips Patient Monitor Arm, Adj, 5.0in. Arm Length, 31 Lbs. max load	23
THMON2218	Monitor Holder - Triple Articulation	23
THMON3111	Monitor Holder - Double Articulation	19
THMON3123	Monitor Holder - Double Articulation	22
THMON3133	Monitor Holder - Double Articulation	23
THMON3163	Monitor Holder - Double Articulation with Keyboard Holder	20
THMON3211	Monitor Holder - Double Articulation	21
THMON3212	Monitor Holder - Double Articulation	21
THMON3311	Monitor Holder - Double Articulation	21
THMON3313	Monitor Holder - Double Articulation	21
THMON3323	Monitor Holder - Double Articulation	20
THMON3333	Monitor Holder - Double Articulation	23
THMON3344	Philips Monitor Support Arm Philips Patient Monitor Arm, Adj, 15.8in. Arm Length, 31 Lbs. max load	23
THMON4111	Monitor Holder - Double Articulation	19
THMON4123	Monitor Holder - Triple Articulation	22
THMON4133	Monitor Holder - Triple Articulation	23
THMON4163	Monitor Holder - Triple Articulation	20
THMON4211	Monitor Holder - Triple Articulation	21
THMON4212	Monitor Holder - Triple Articulation	22
THOPT004	VESA 100 Adaptor	20
THOPT005	Monitor Adaptor for Nihon Kohen	23
THOPT0291	Storage Basket	28
THOPT2004	Cable Winders	30
THOPT9893	Stainless Steel Storage Basket	28
THPUM6128	Pump Support	13
THSHEL11	Equipment Shelves, Large - 25.6" W x 20.9" D Large Shelf Only, 110 lbs. max load	7
THSHEL12	Equipment Shelves, Large - 25.6" W x 20.9" D Large Shelf with 2 Rails, 110 lbs max load	7
THSHEL14	Equipment Shelves, Large - 25.6" W x 20.9" D Large Shelf with 2 Handles, 110 lbs max load	7

Item	Description	Page No.
THSHEL16	Equipment Shelves, Large - 25.6" W x 20.9" D Large Shelf with 2 Rails, 2 Handles, 110 lbs max load	7
THSHEL4106	Equipment Shelf with Drawer and Mousepad - 17.2" W x 14.2" D Shelf with Drawer and Mousepad, 33 lbs max load"	7
THSHES11	Equipment Shelves, Small - 17.7" W x 16.9" D Small Shelf Only, 44 lbs max load	7
THSHES12	Equipment Shelves, Small - 17.7" W x 16.9" D Small Shelf with 2 Rails, 44 lbs max load	7



STERIS OFFICES WORLDWIDE

Belgium +32 3 304 95 44
Canada +905 677 0863
China +86 10 5900 3786
France +33 5 56 93 94 94
Germany +49 221 4661 20 30
Italy +39 02 213 034 1
Korea +82 2 527 1517
Latin America +1305 442 9822
Malaysia +60 3 7954 9822
Russia +7 499 737 7733
Singapore +65 68 41 7677
Spain +34 91 658 5920
USA 440-354-2600